



SabahGov Microsoft Windows Server Update Services (WSUS)

Table of Contents

Page

Windows 7

3

Windows 8

17

Windows 10

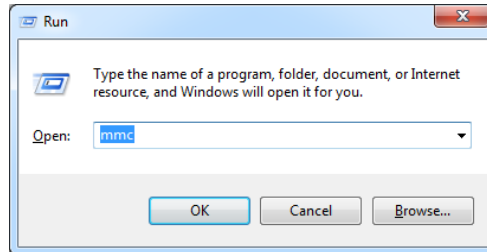
32

Windows 11

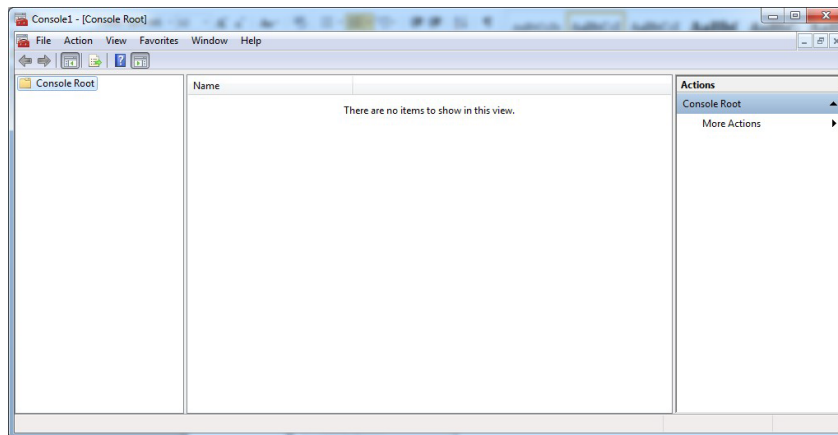
48

Windows 7

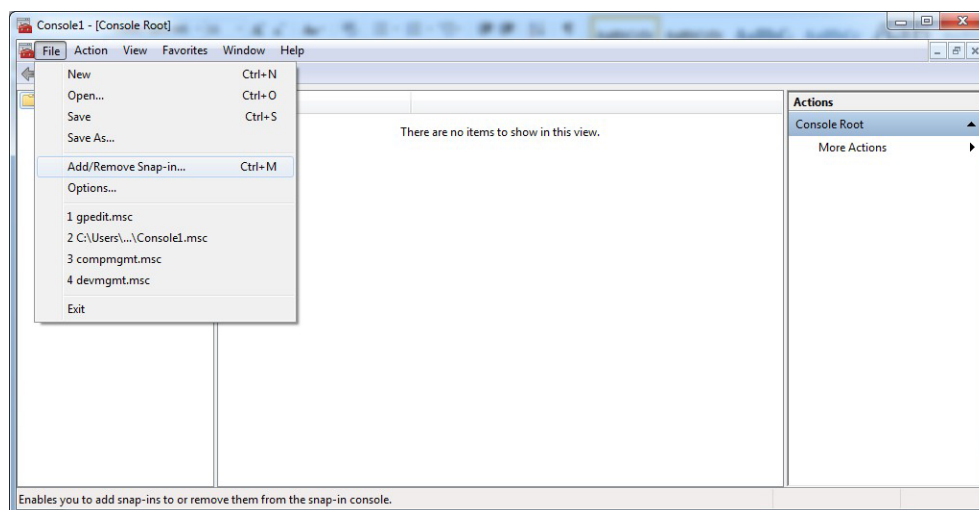
1. Click **START**, select **Run**



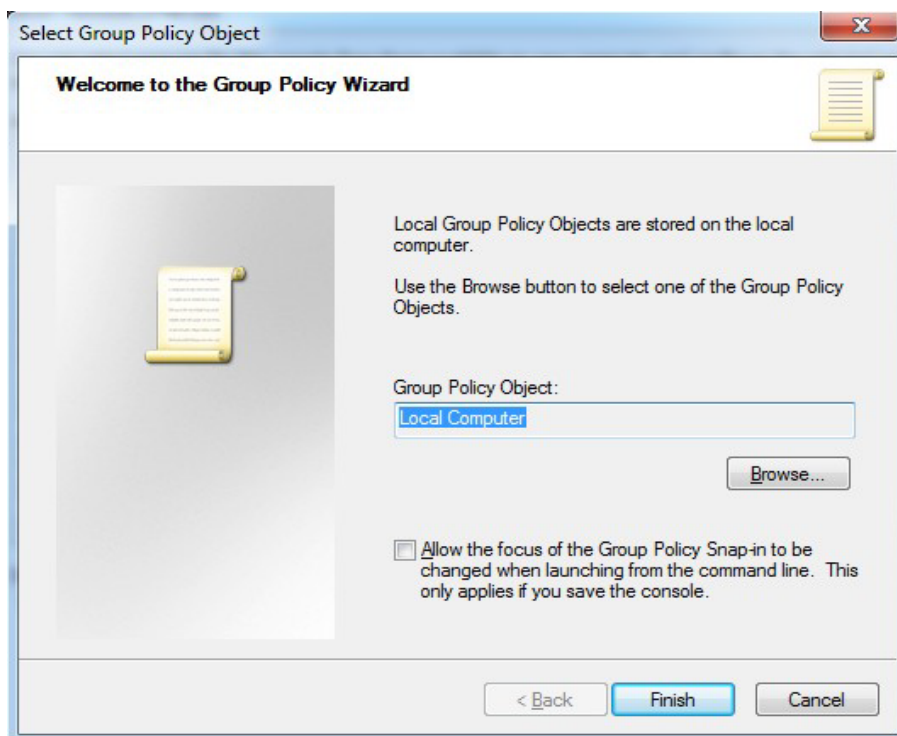
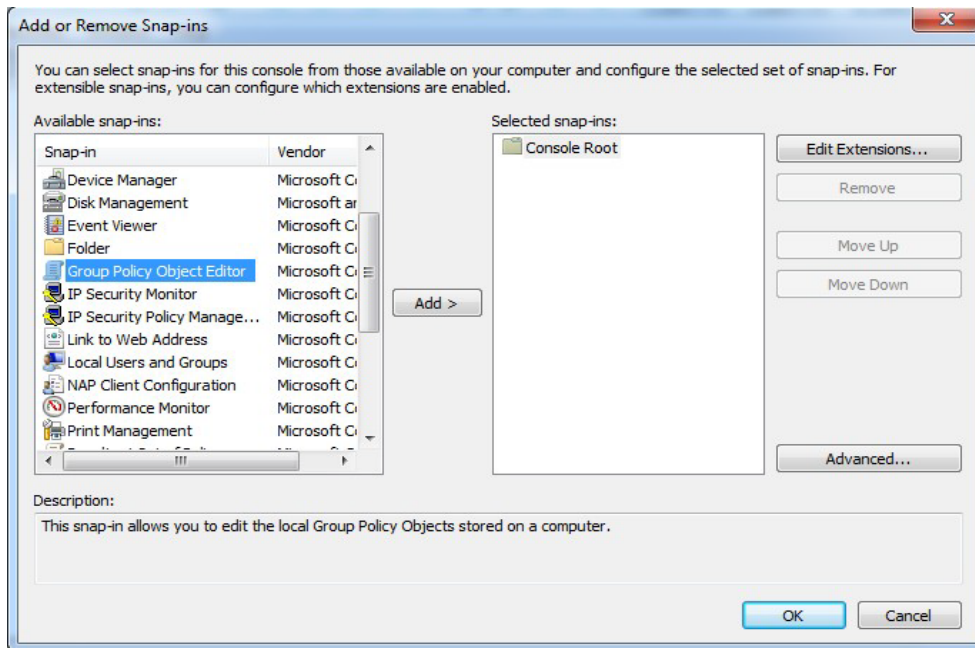
2. The Microsoft Management Console will loaded.



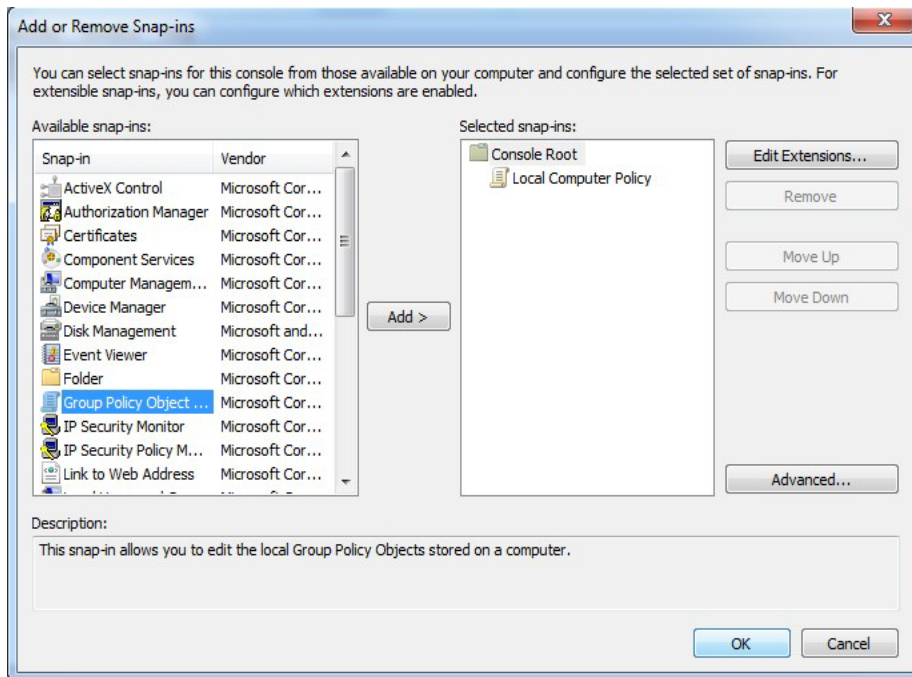
3. Click file > Add/Remove Snap-in..



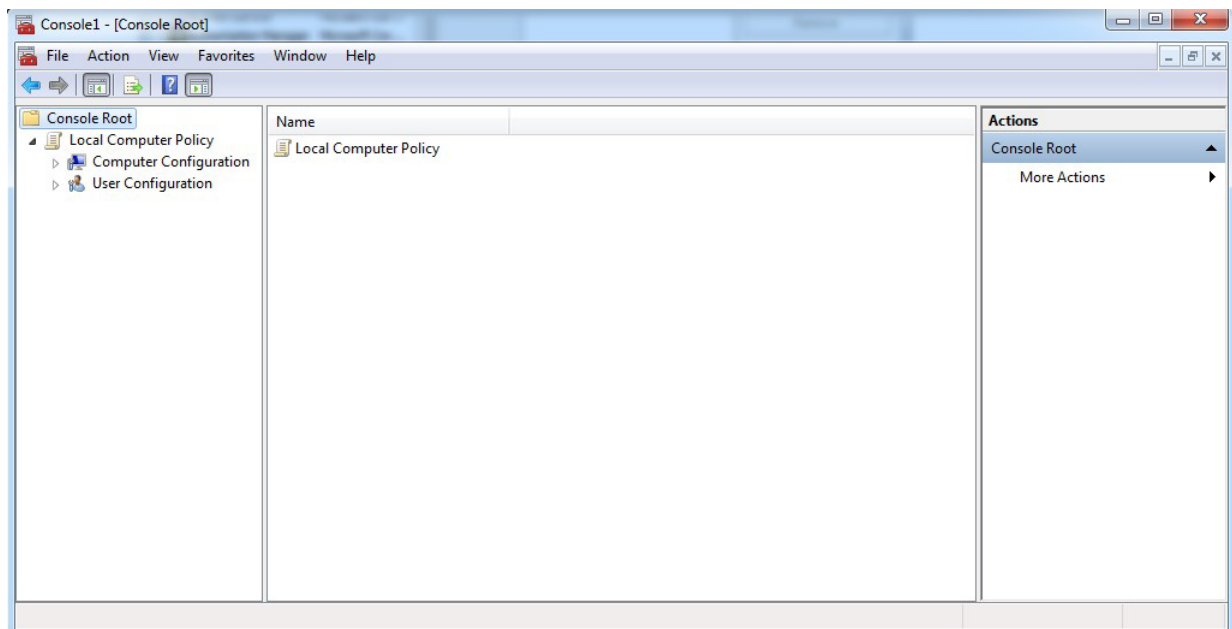
4. Add on Group Policy Object Editor

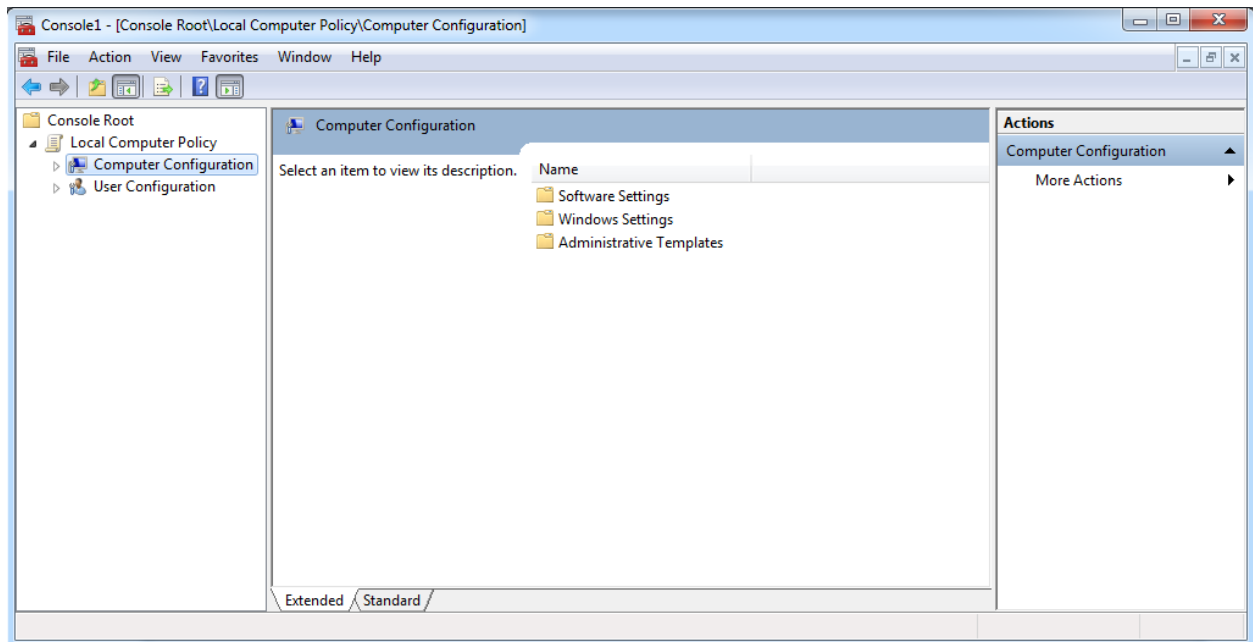


5. Then press Finish and OK

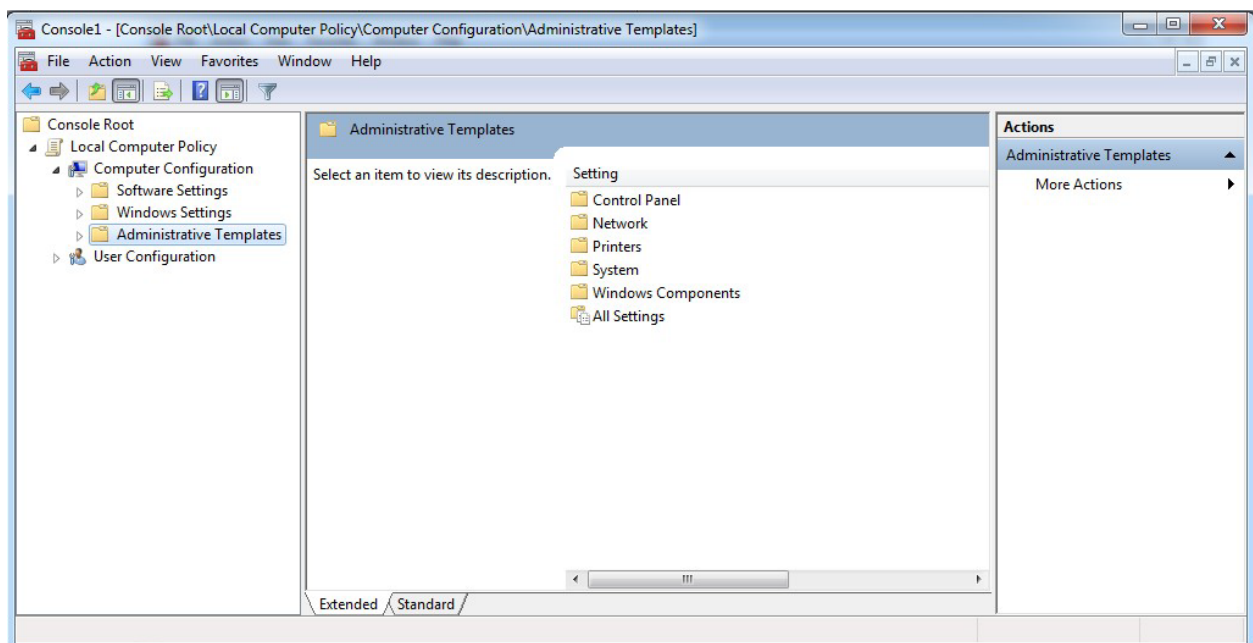


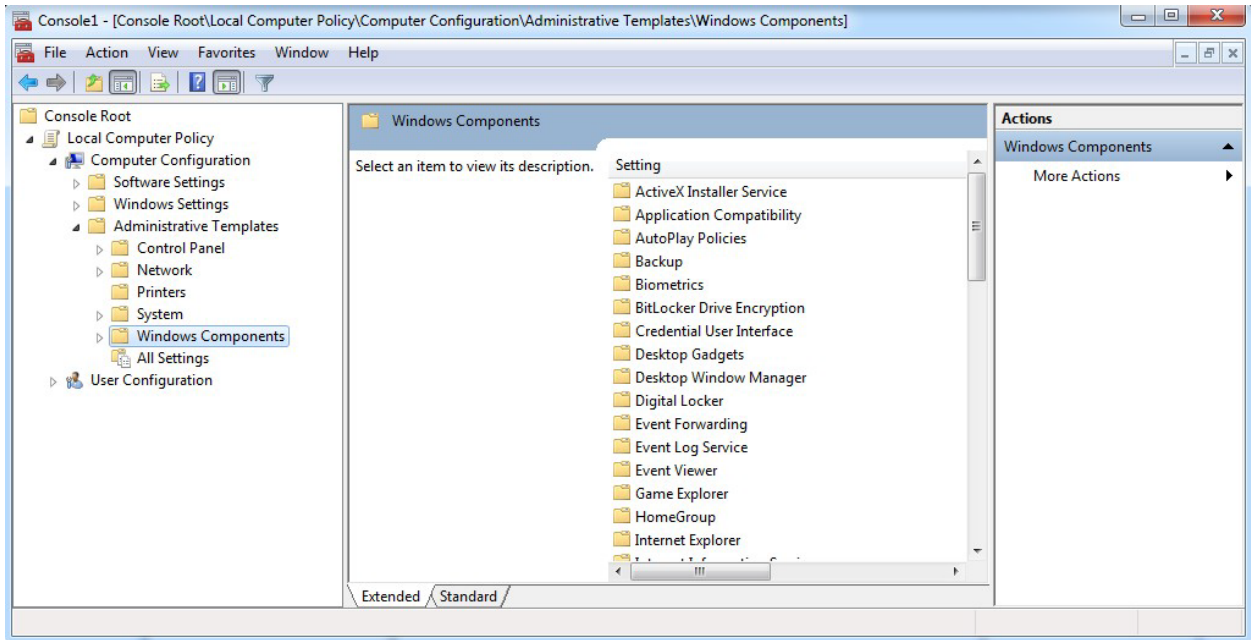
6. Console Root > Local Computer Policy > Computer Configuration



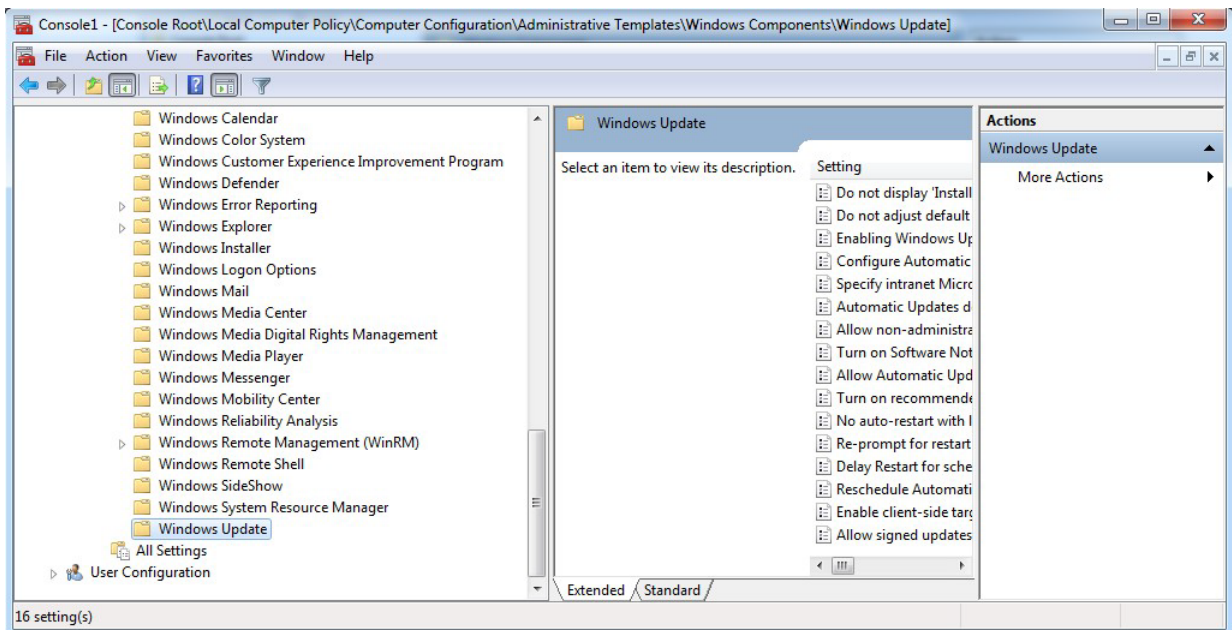


7. Click on Administrative Templates Folder > Windows Component Folder

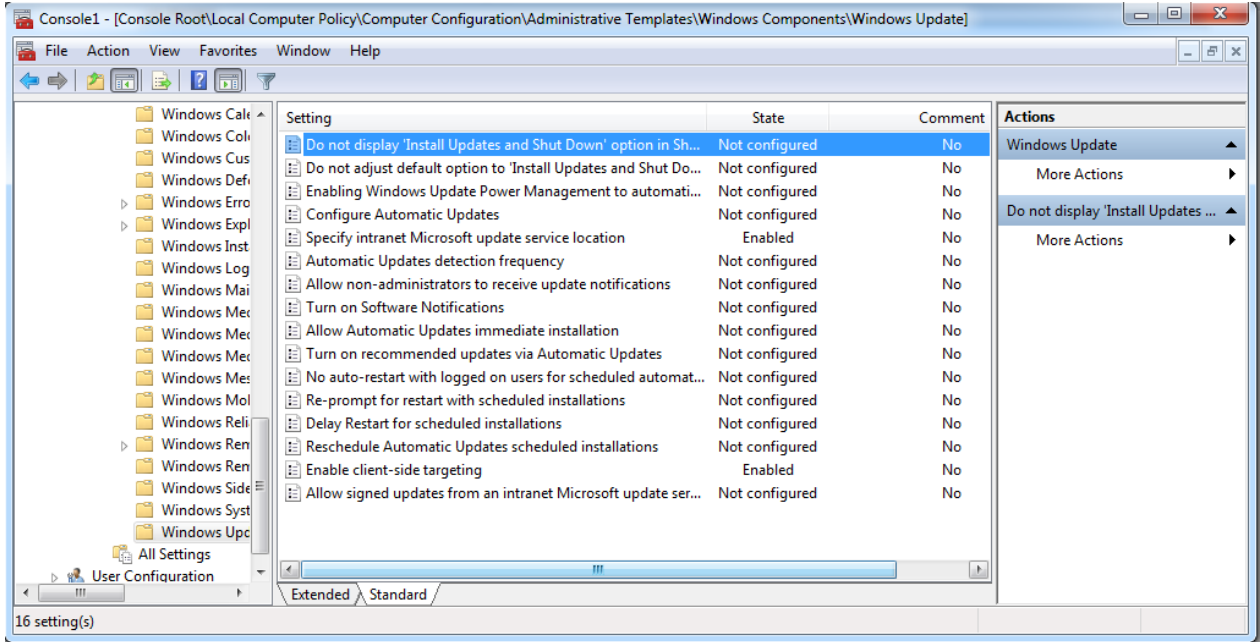




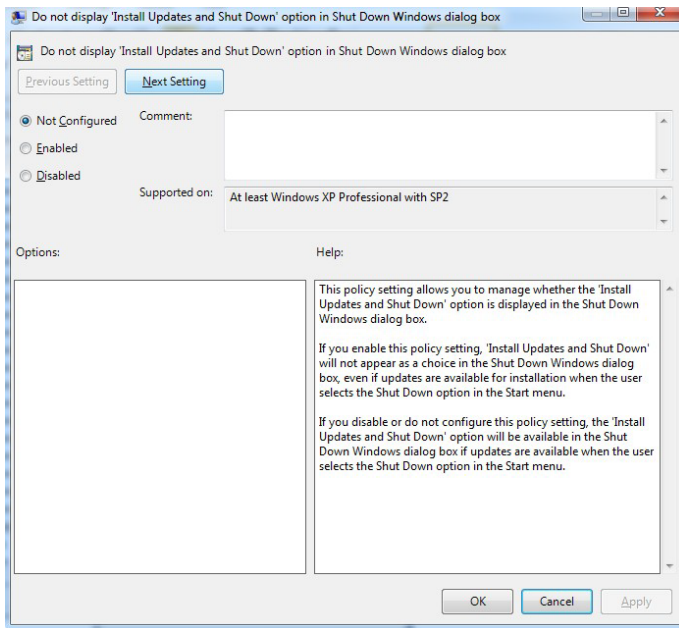
8. Go to Bottom Panel and click on Windows Update Folder



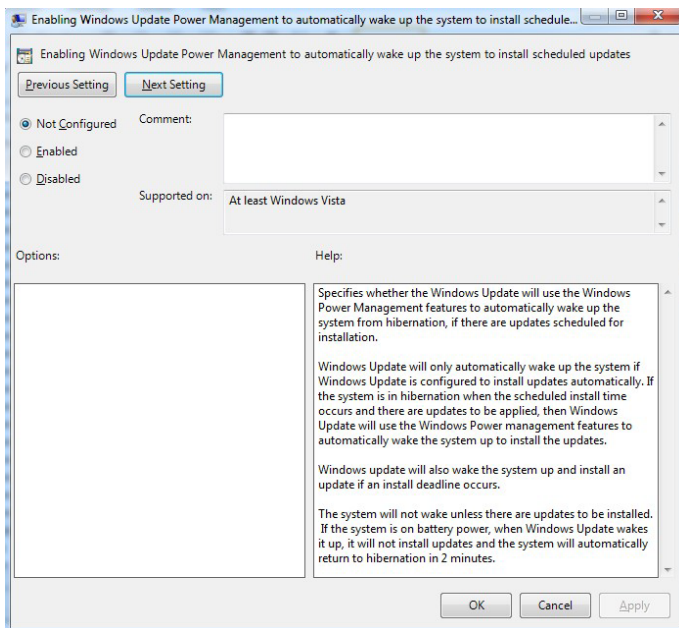
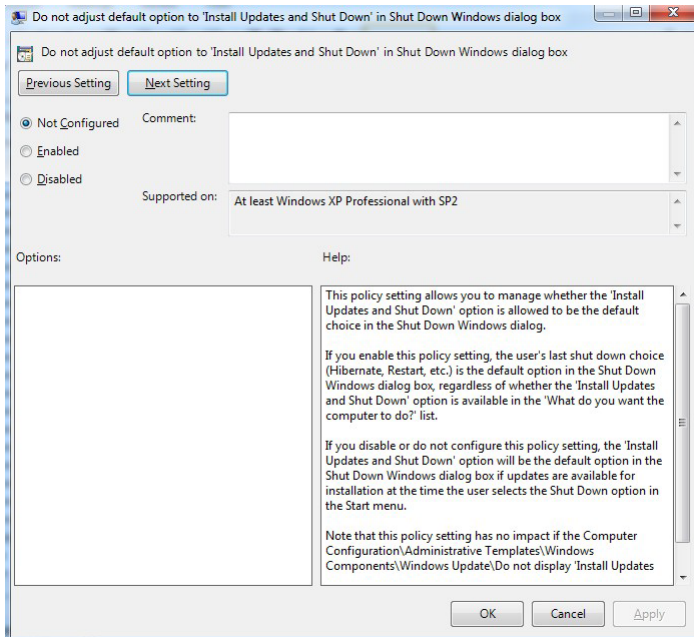
9. After you click Windows Update, on the right side of the MMC will shows the screenlike below, start configure by double click the “Configure Automatic Updates”.



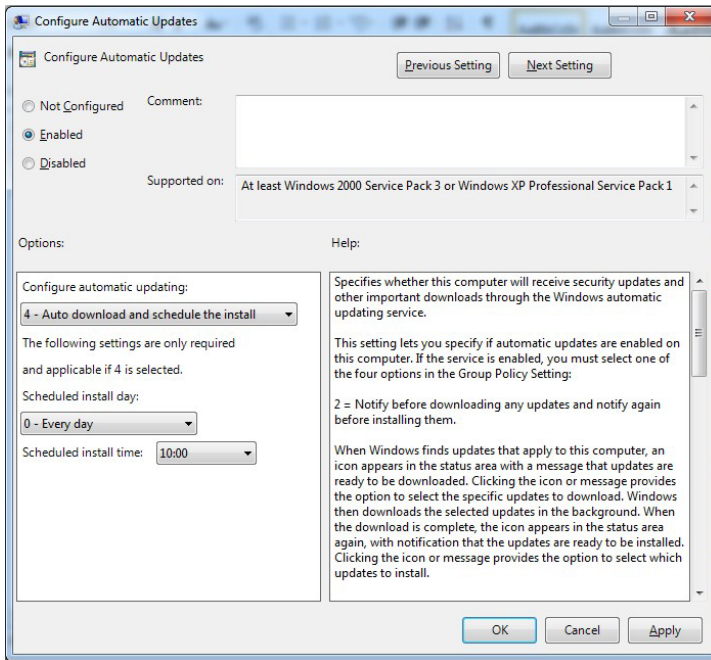
10. Simply follow the slide showing below to complete the setup.



Click Next Setting

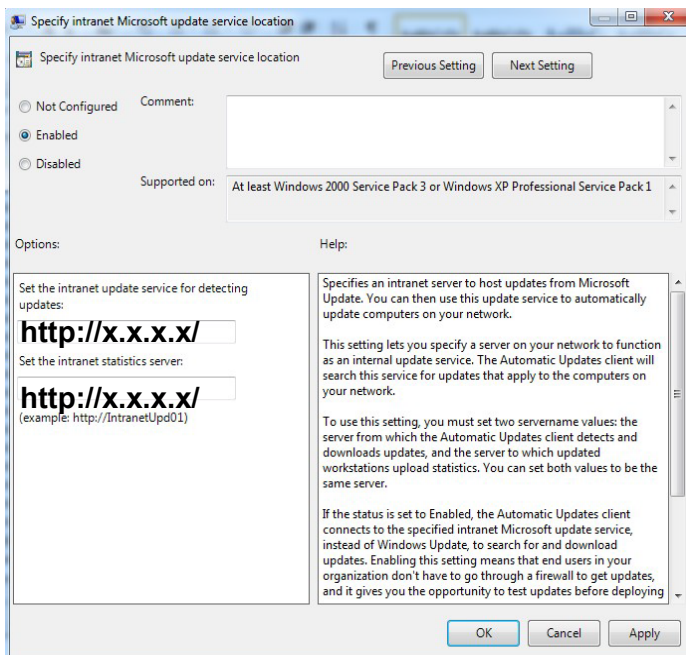


Click Next Setting

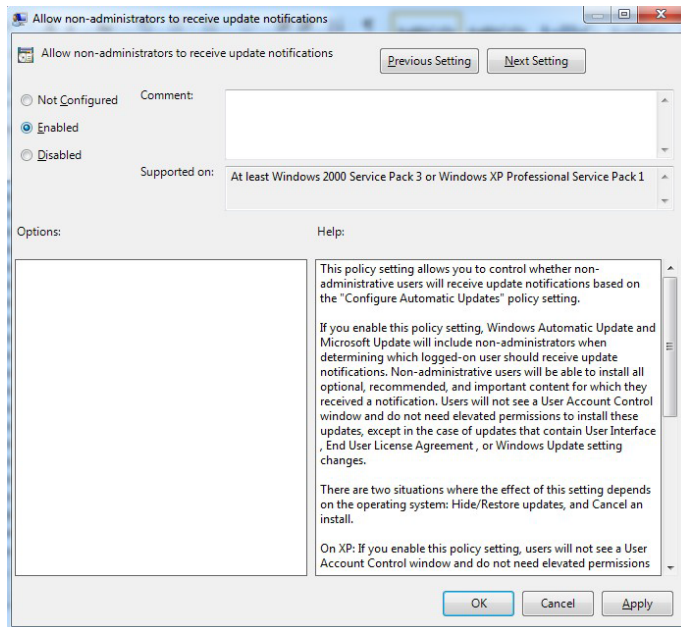
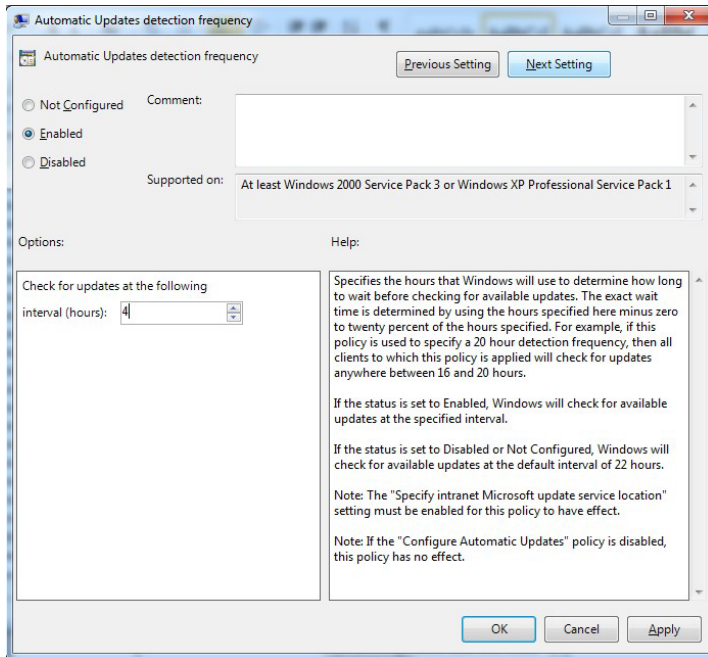


Please put the ip given by the administrator

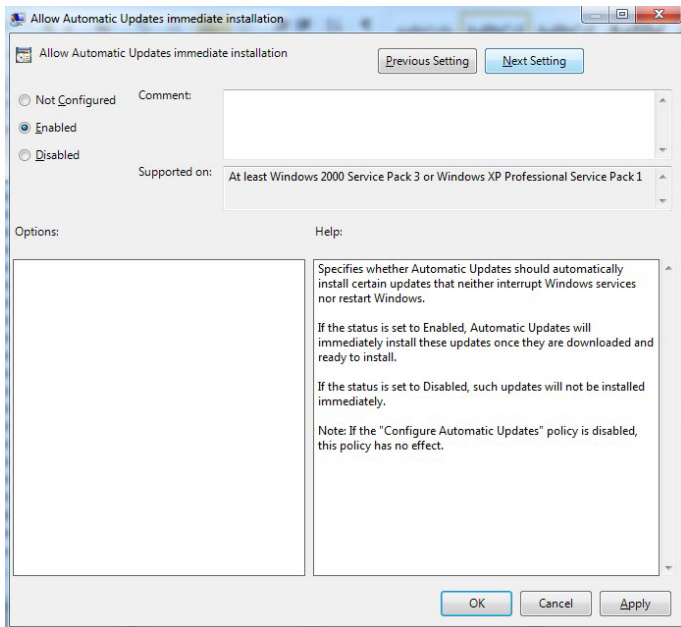
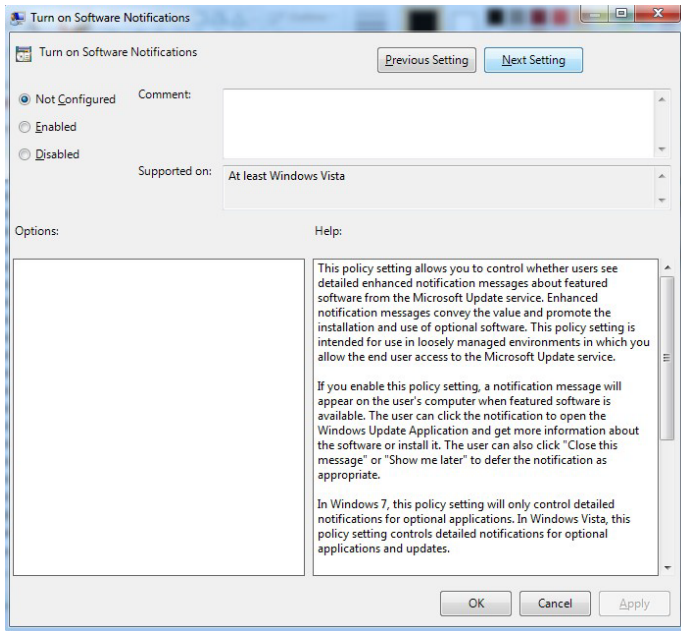
Example : <http://x.x.x.x/>



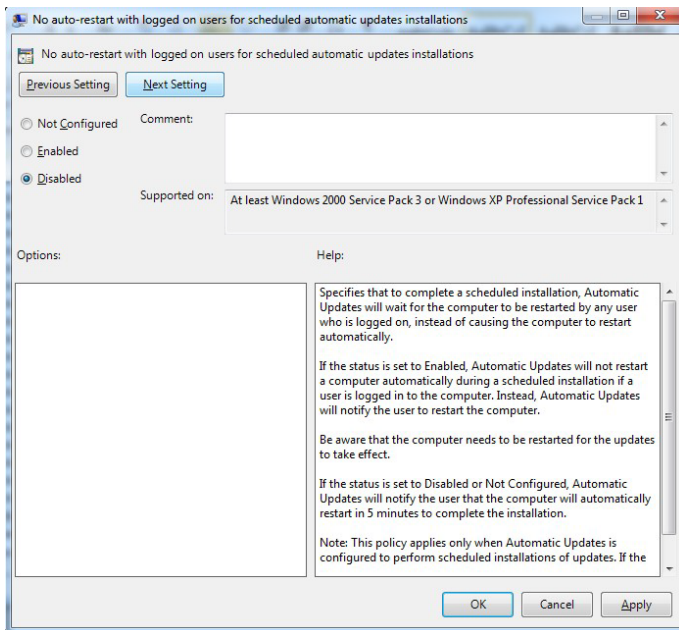
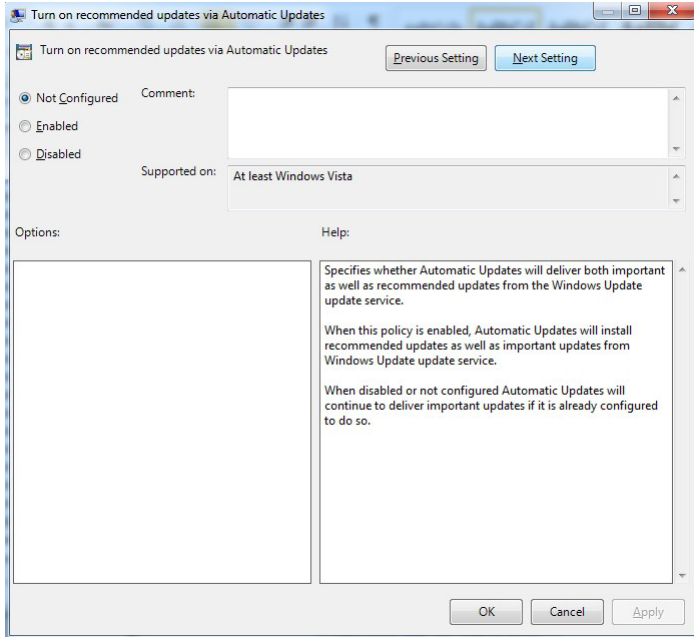
Click Next Setting



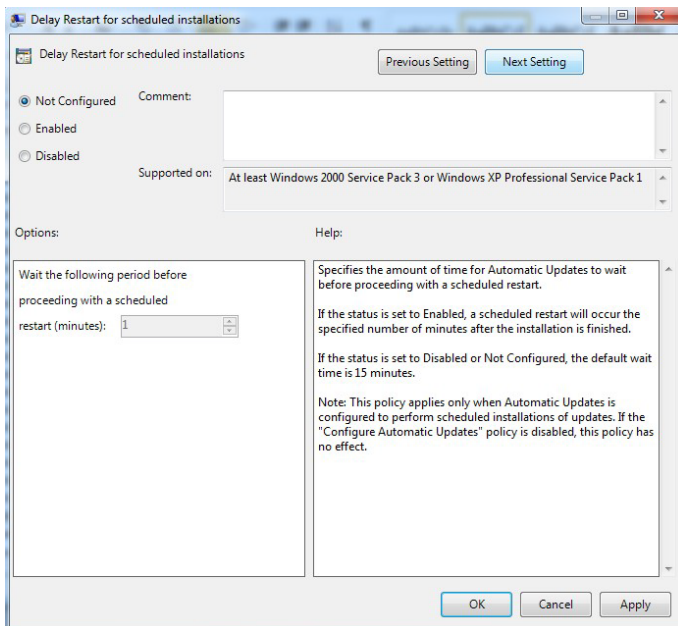
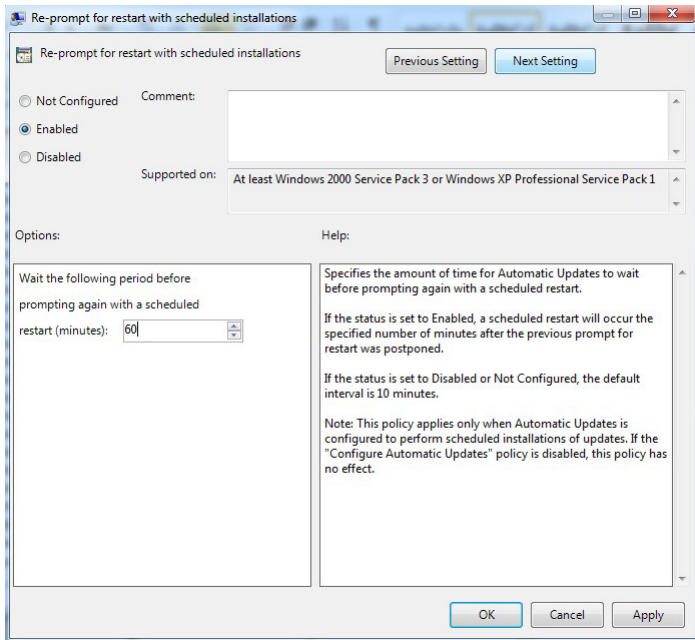
Click Next Setting



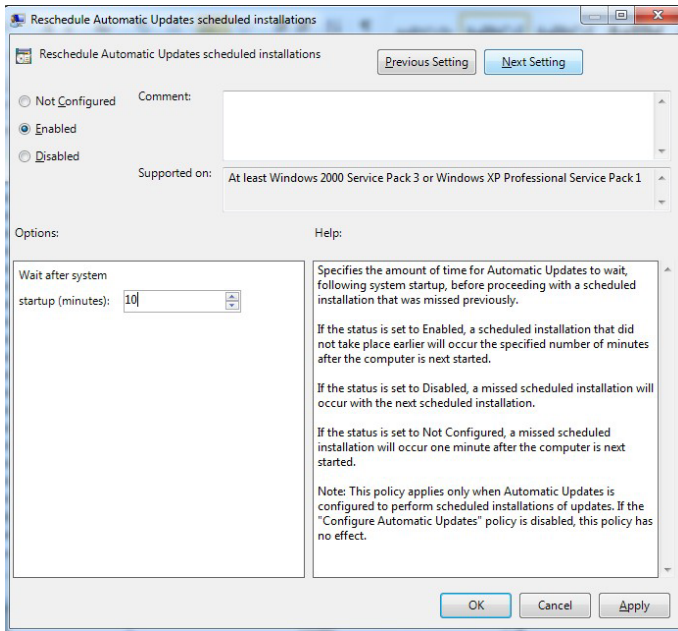
Click Next Setting



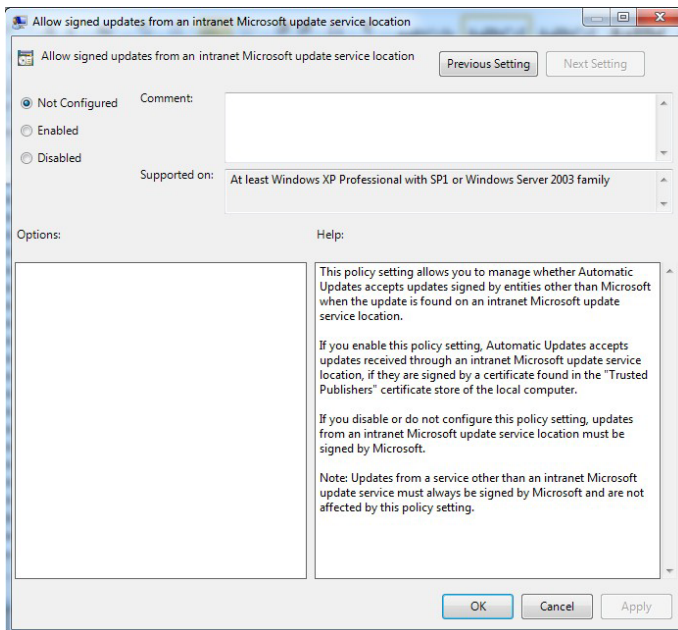
Click Next Setting

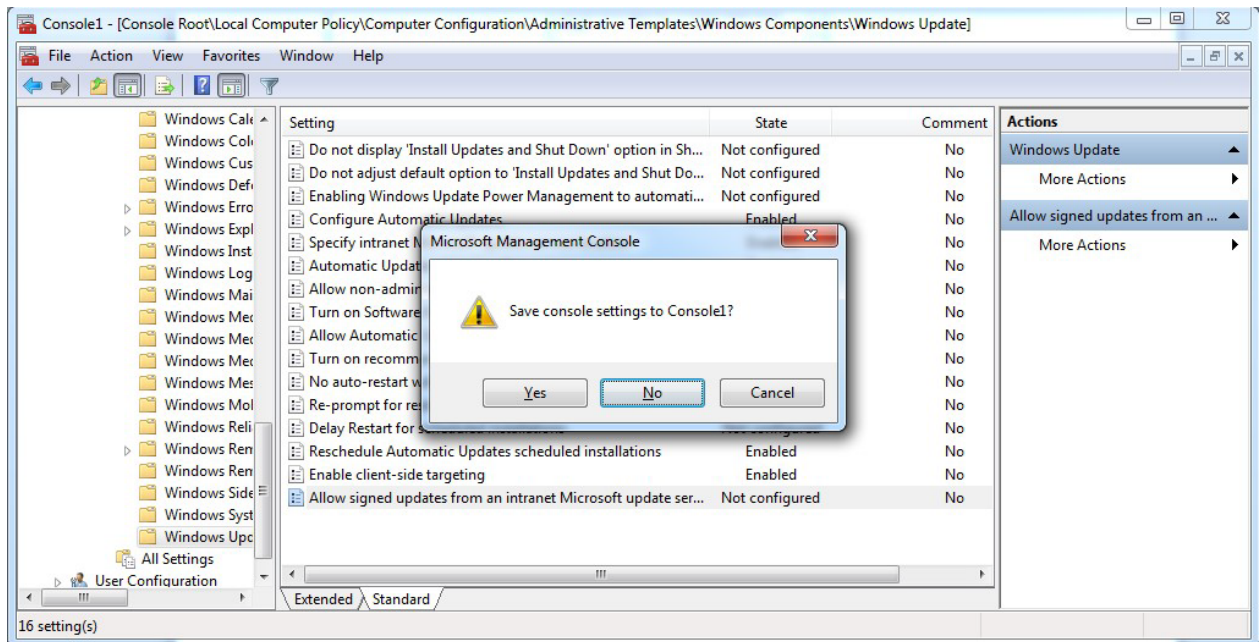


Click Next Setting



Click Next Setting





just close the MMC without saving it.

11. Open Command Prompt . Run gpupdate

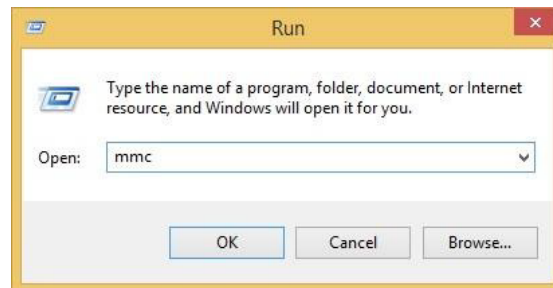
```
Microsoft Windows [Version 6.3.9600]
(c) 2013 Microsoft Corporation. All rights reserved.
C:\Users\Administrator>gpupdate
Updating policy...
Computer Policy update has completed successfully.
```

12. Run wuauclt /detectnow

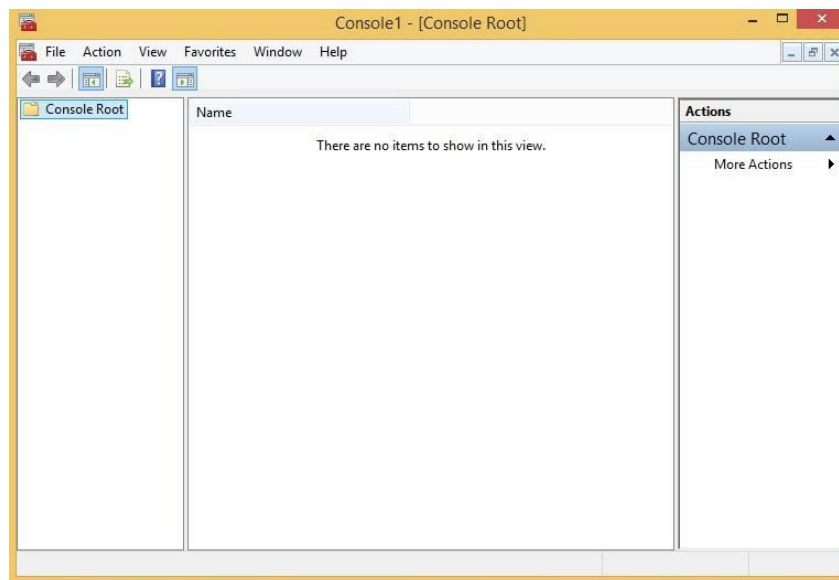
```
Microsoft Windows [Version 6.3.9600]
(c) 2013 Microsoft Corporation. All rights reserved.
C:\Users\Administrator>wuauclt /detectnow
C:\Users\Administrator>_
```


Windows 8

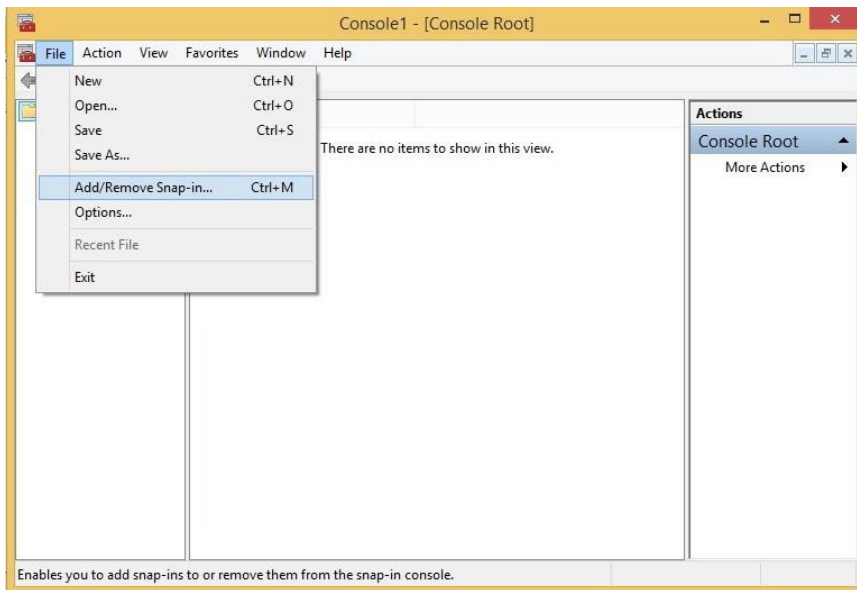
1. Click **START**, select **Run**



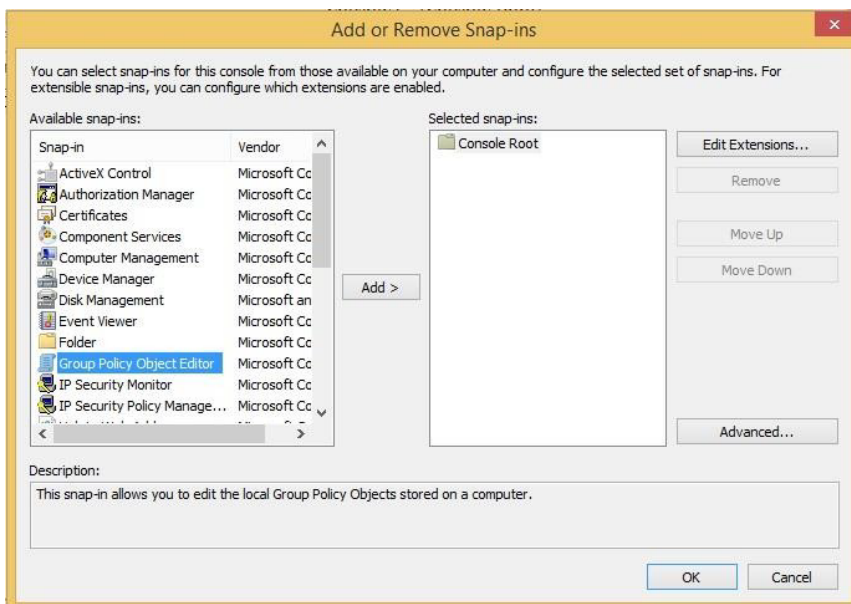
2. The Microsoft Management Console will loaded.

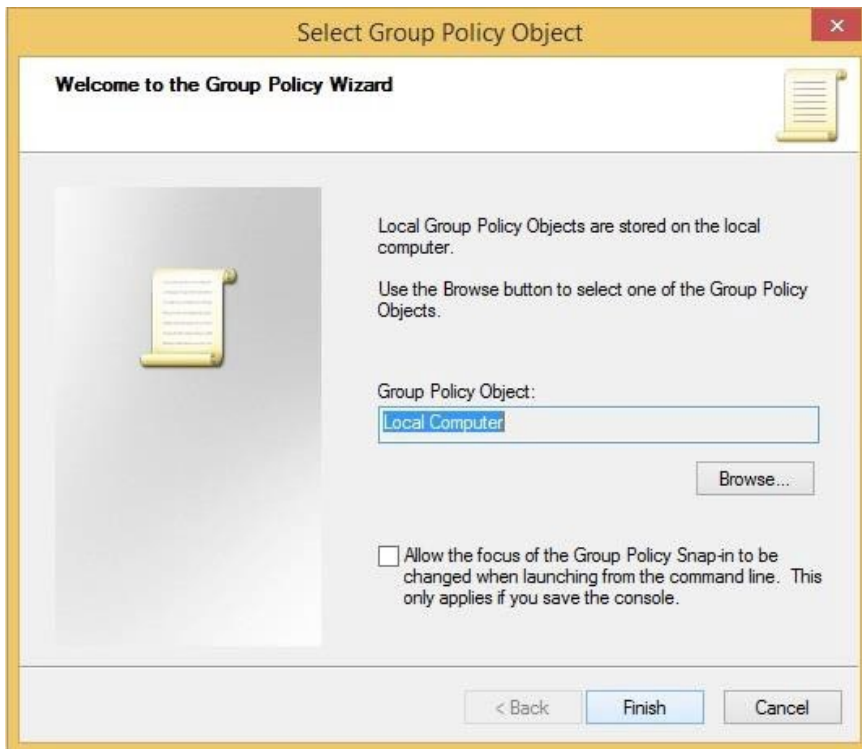


3. Click file > Add/Remove Snap-in..

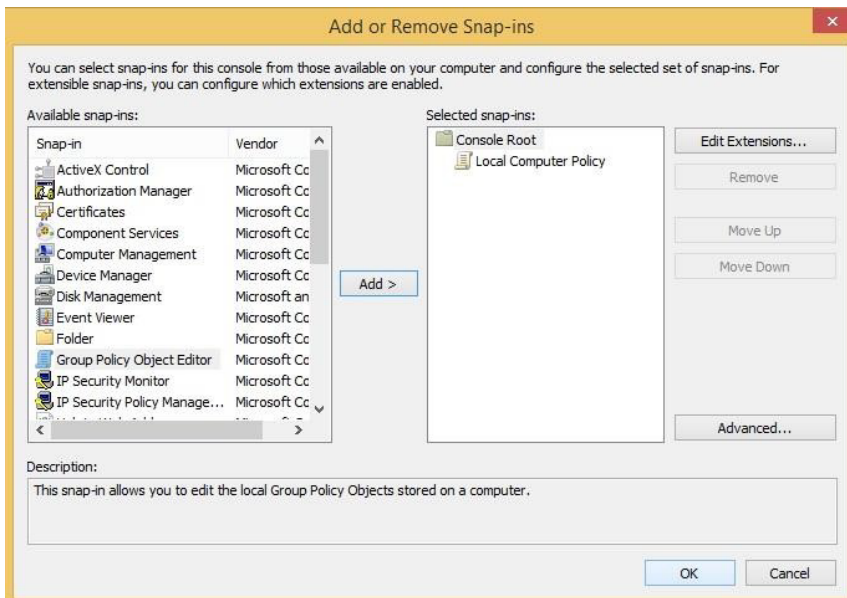


4. Add on Group Policy Object Editor

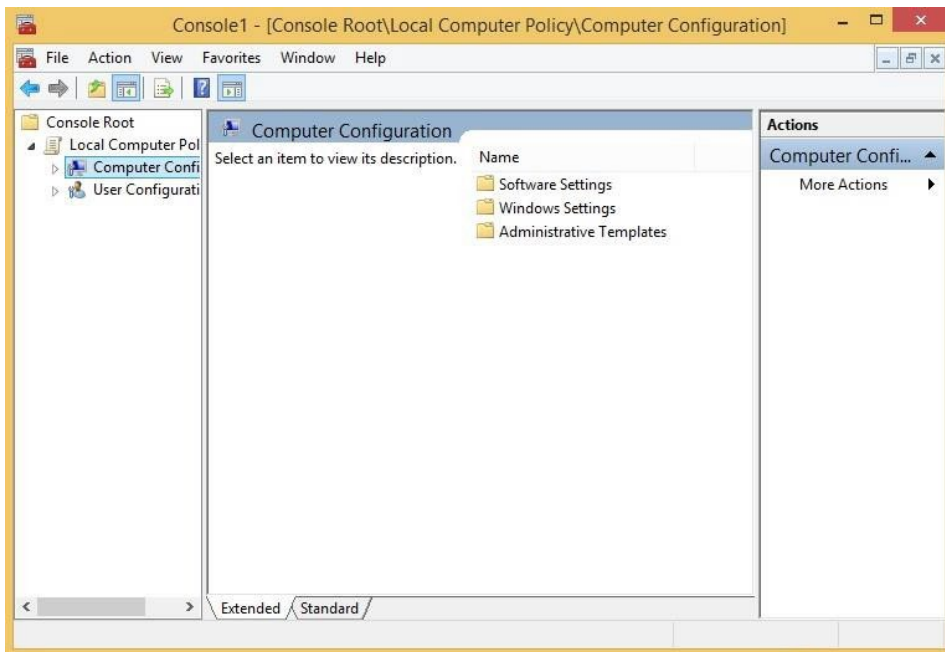
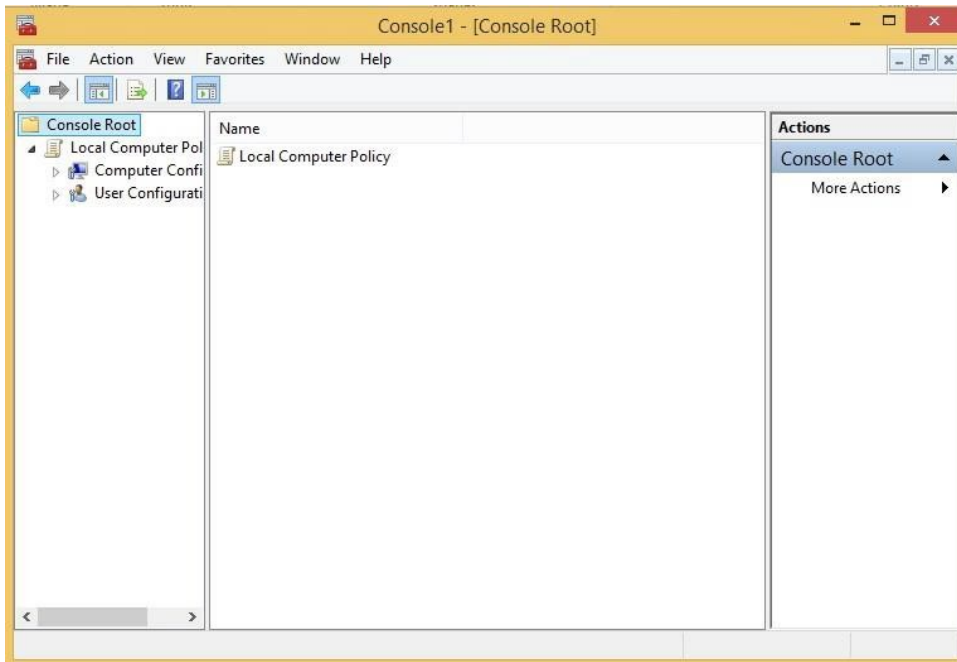




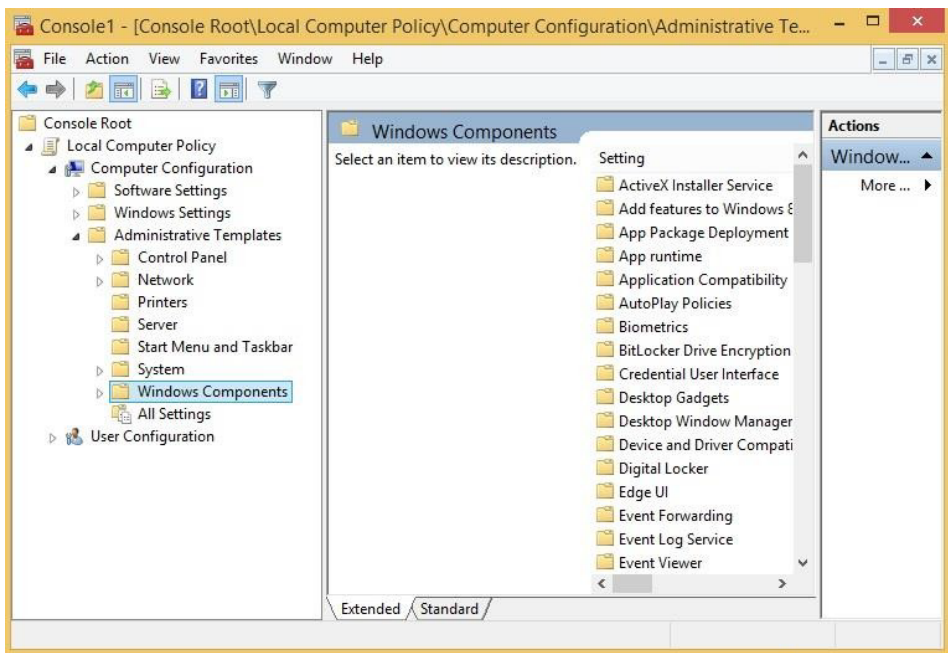
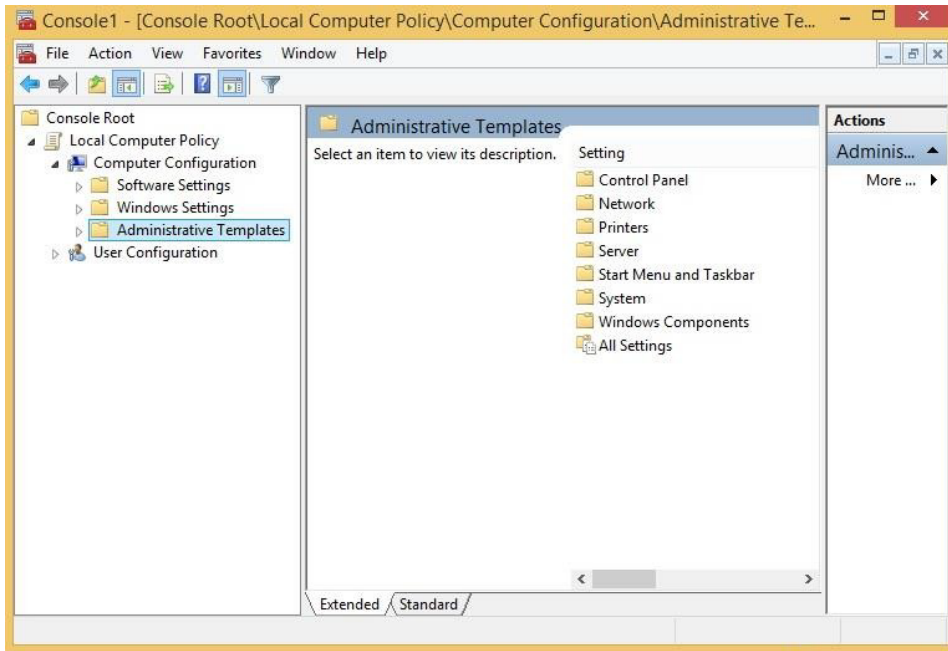
5. Then press Finish and OK



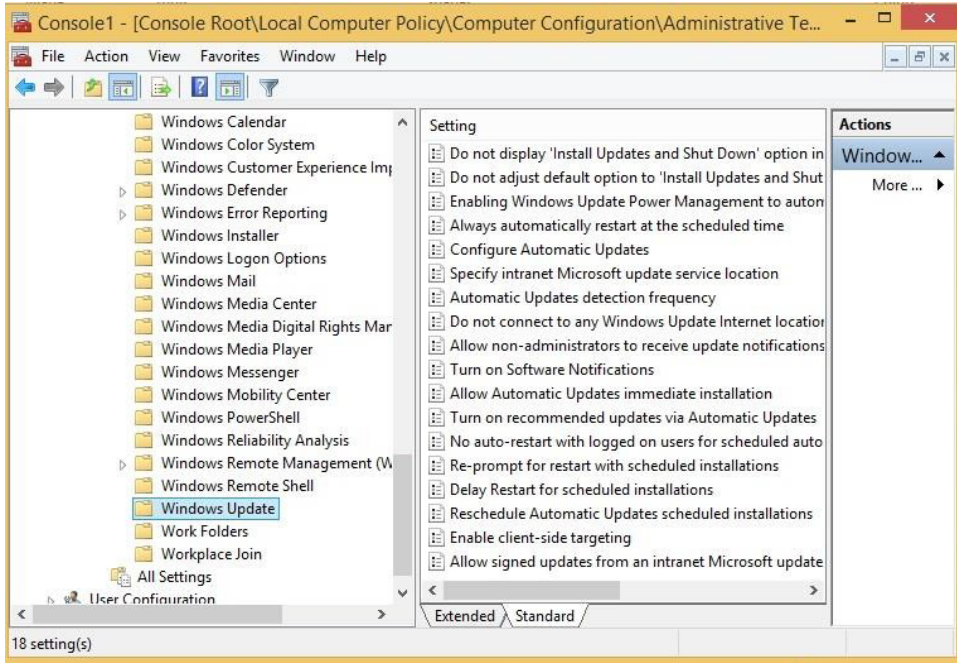
6. Console Root > Local Computer Policy > Computer Configuration



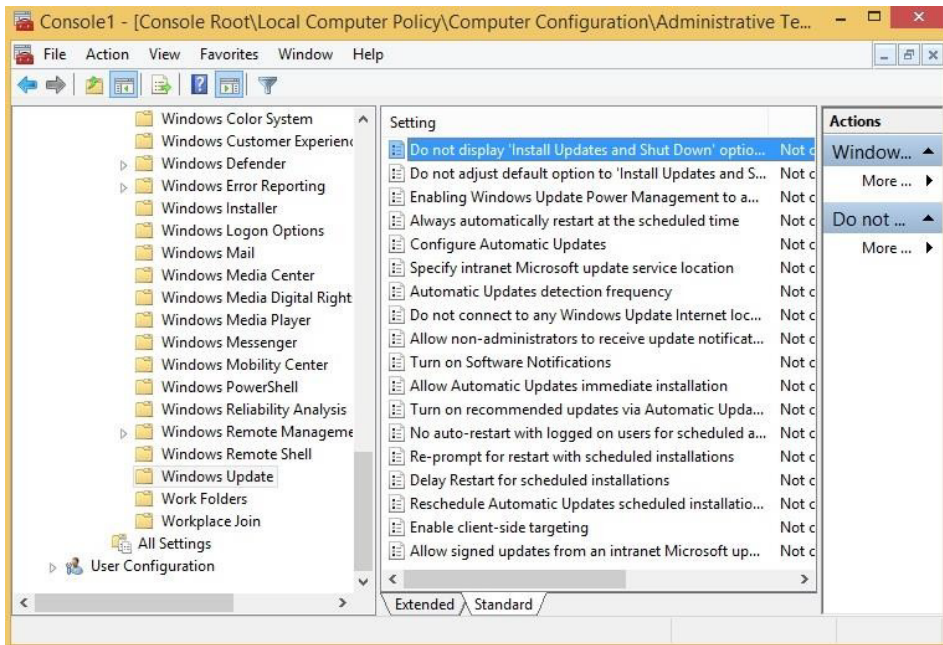
7. Click on Administrative Templates Folder > Windows Component Folder



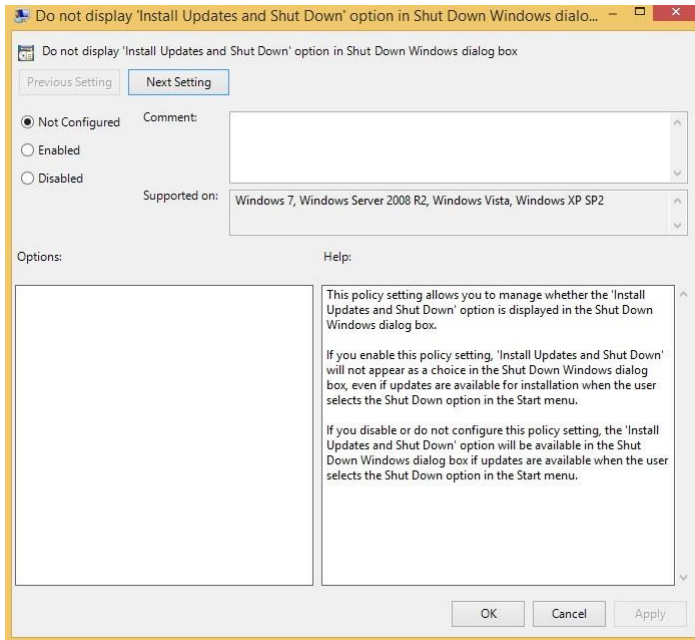
8. Go to Bottom and click on Windows Update Folder



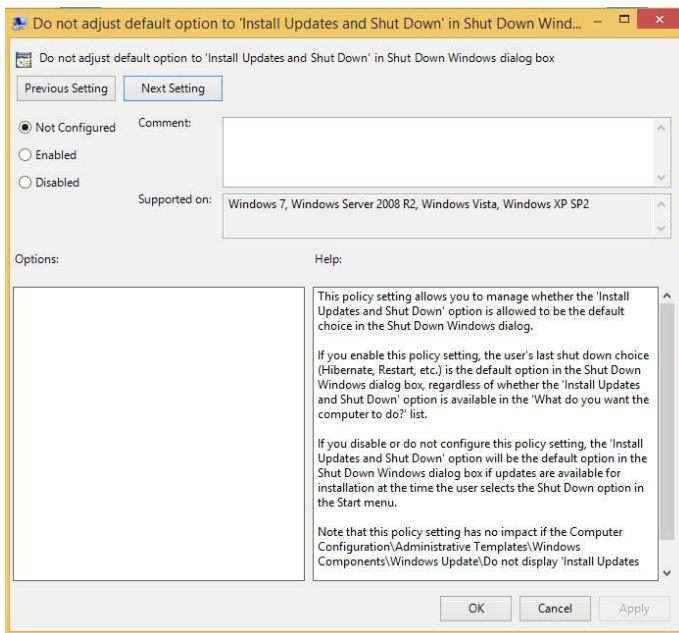
9. After you click Windows Update, on the right side of the MMC will shows the screenlike below, start configure by double click the “Configure Automatics Updates”.

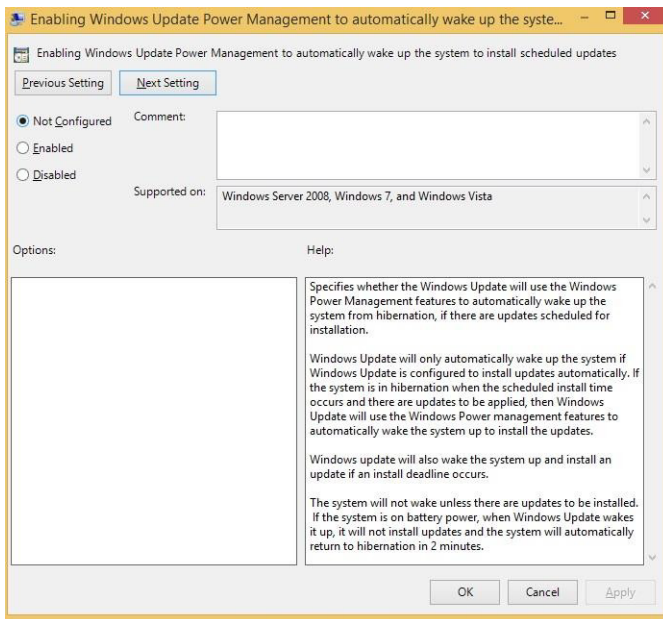


10. Simply follow the slide showing below to complete the setup.

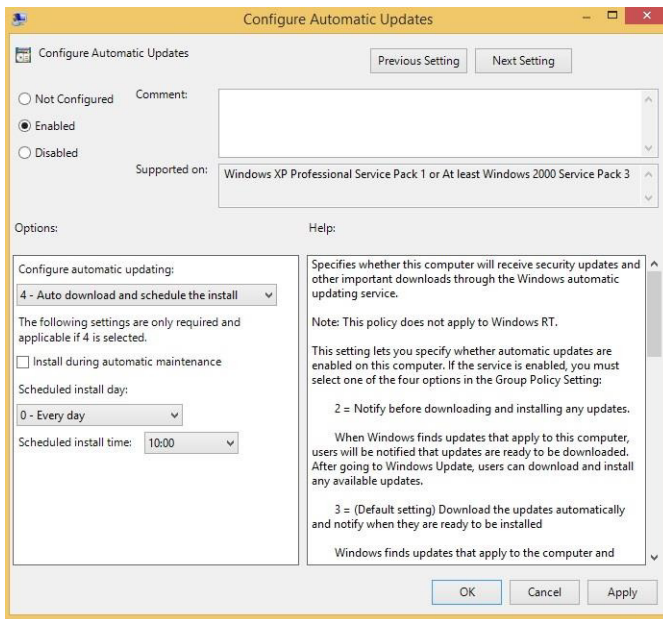


Click Next Setting



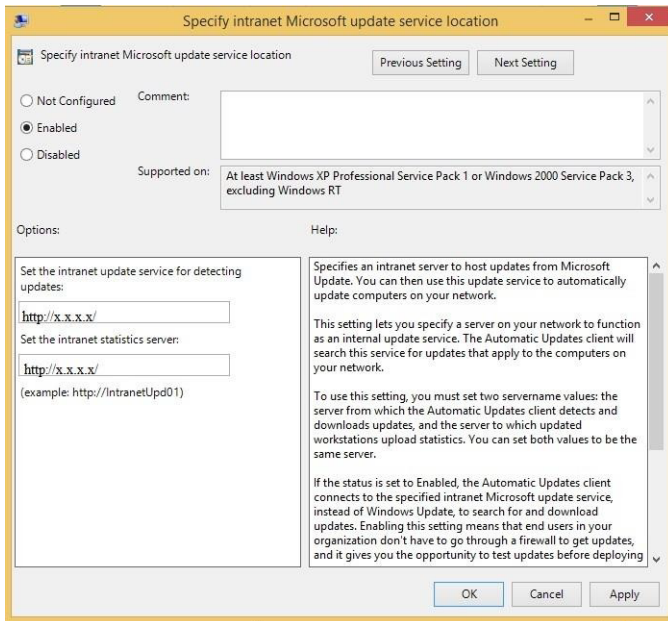


Click Next Setting

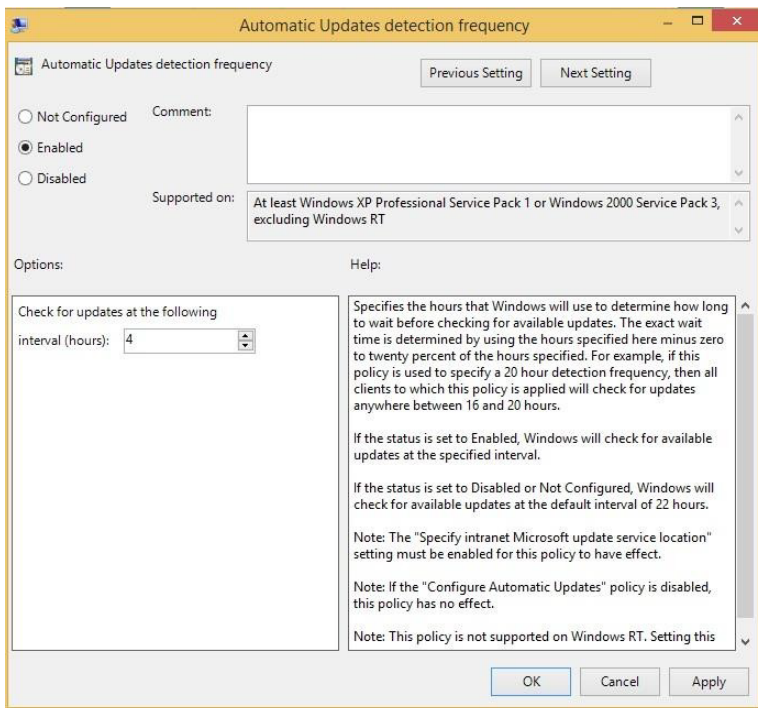


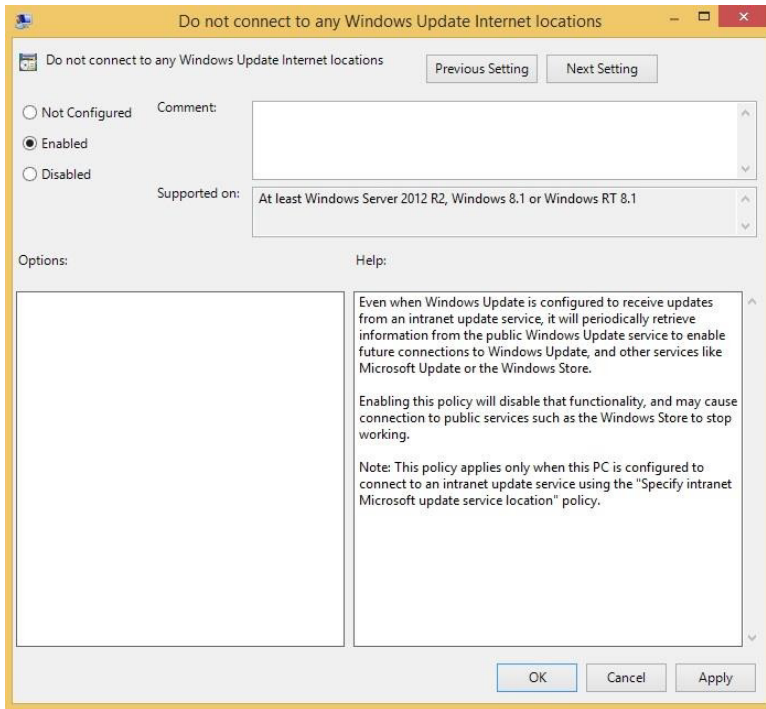
please put the ip given by the administrator

Example : <http://x.x.x.x/>

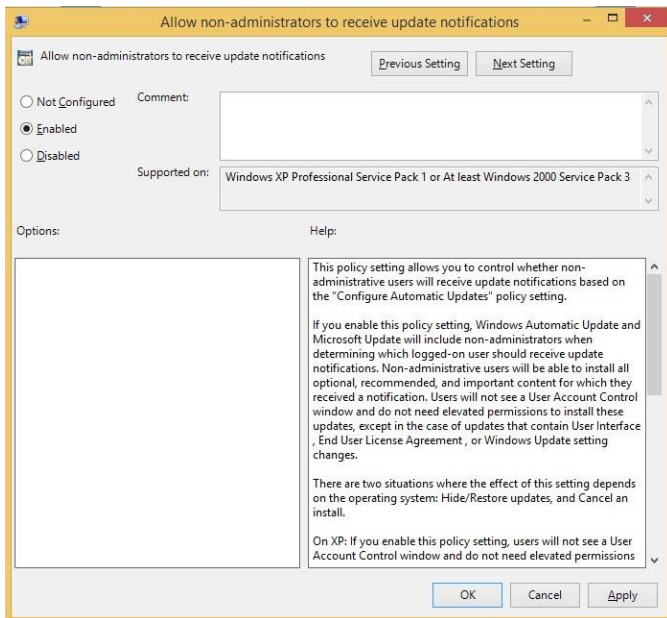


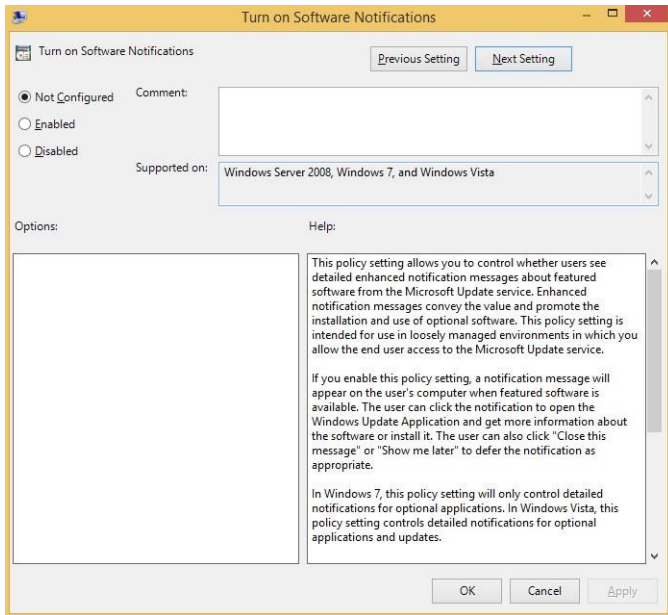
Click Next Setting



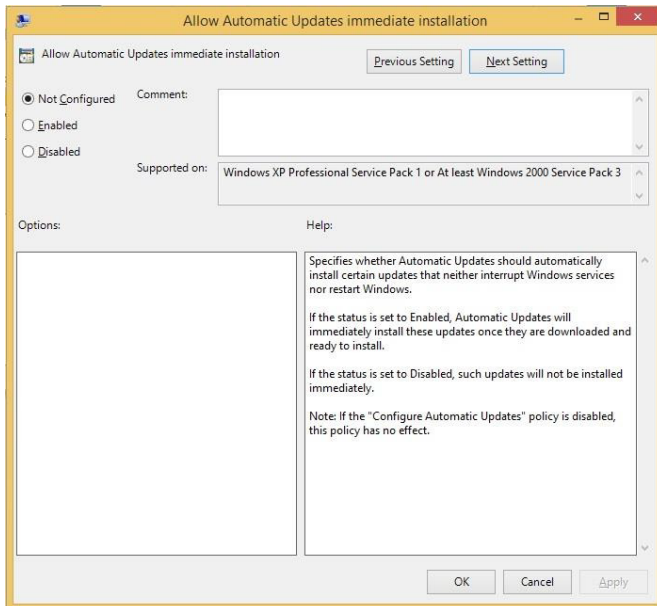


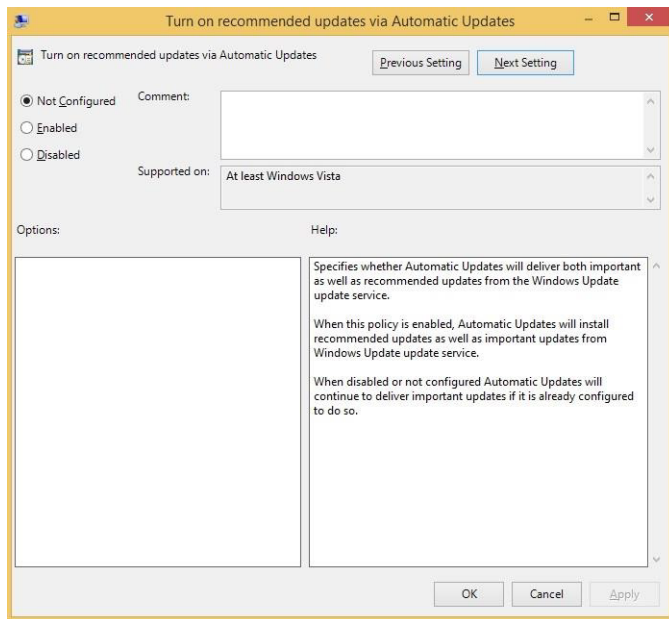
Click Next Setting



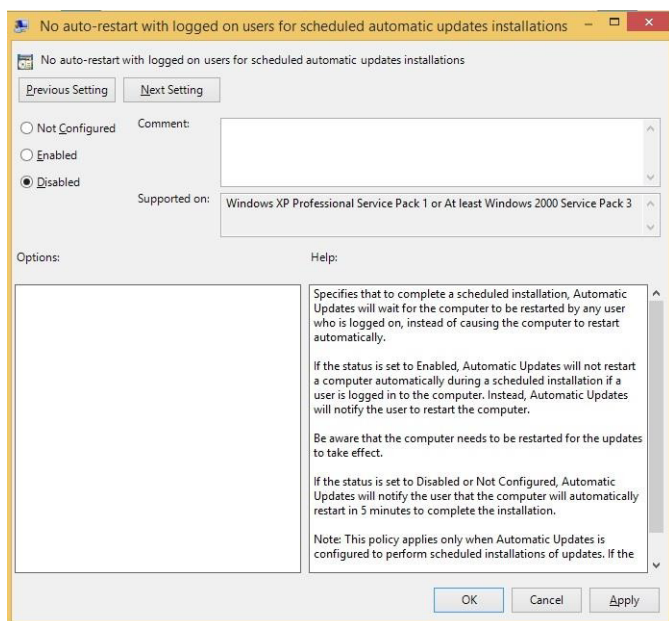


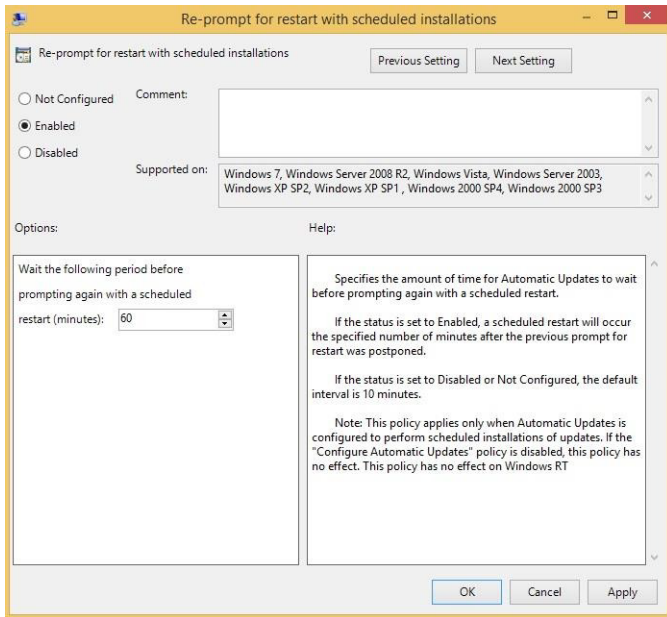
Click Next Setting



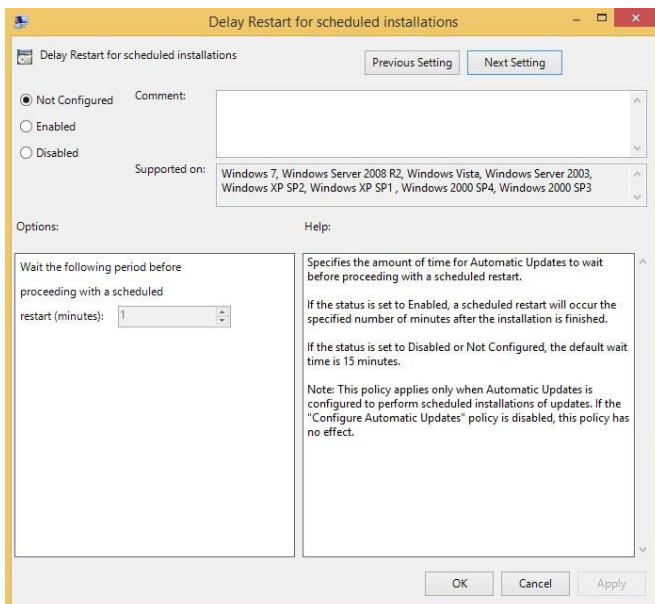


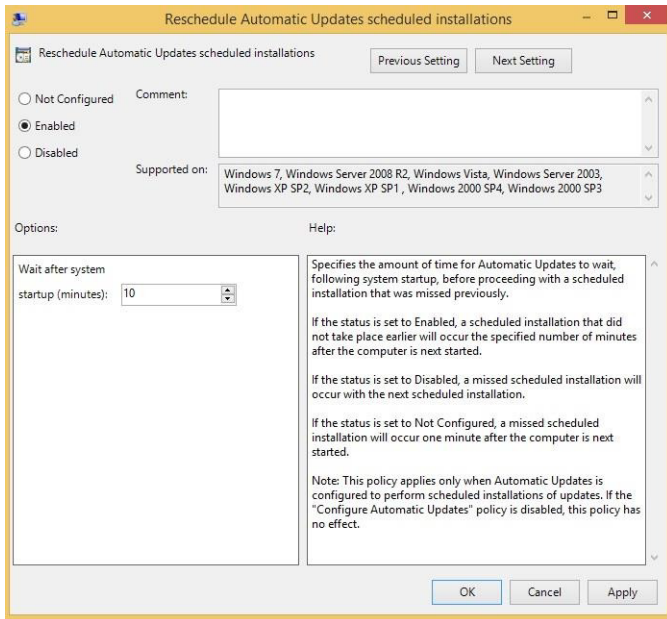
Click Next Setting



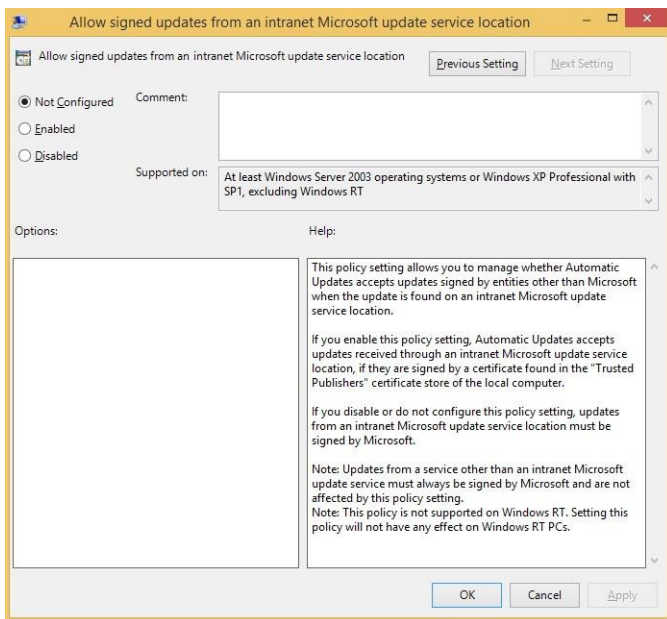


Click Next Setting

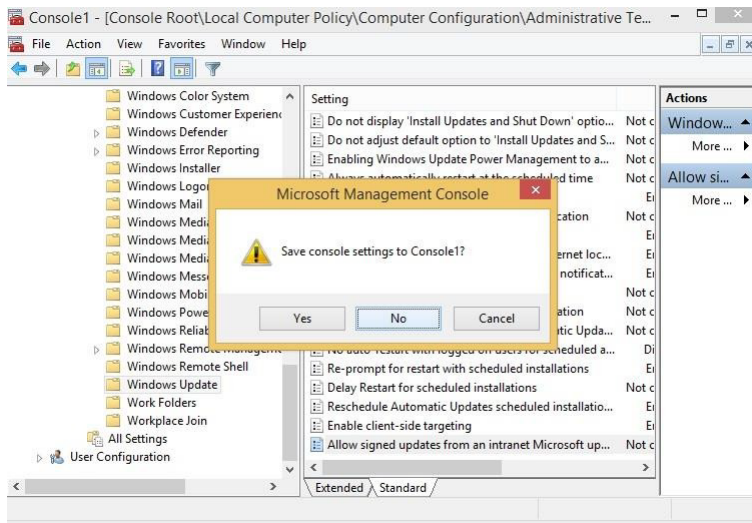




Click Next Setting



Click OK



11. Lastly, just close the MMC without saving it.

12. Open Command Prompt . Run gpupdate

```
Microsoft Windows [Version 6.3.9600]
(c) 2013 Microsoft Corporation. All rights reserved.

C:\Users\Administrator>gpupdate
Updating policy...

Computer Policy update has completed successfully.
```

13. Run wuauctl /detectnow

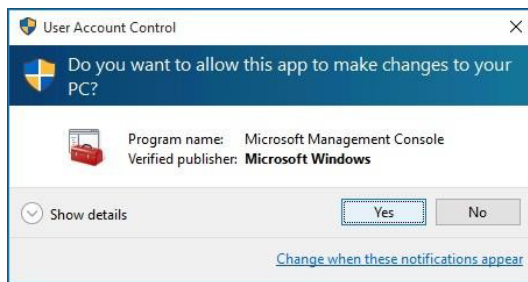
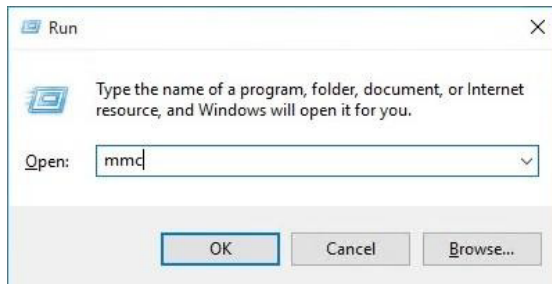
```
Microsoft Windows [Version 6.3.9600]
(c) 2013 Microsoft Corporation. All rights reserved.

C:\Users\Administrator>wuauctl /detectnow
C:\Users\Administrator>_
```

14. Perform/Run Windows Update

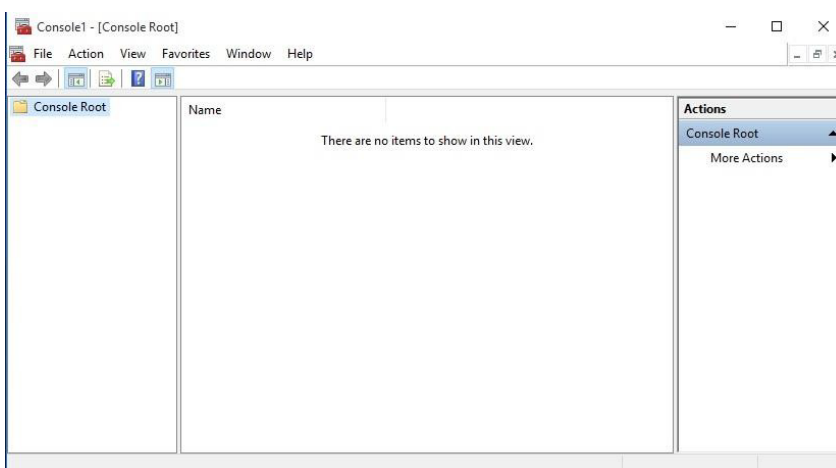
Windows 10

1. Click **START**, select **Run**

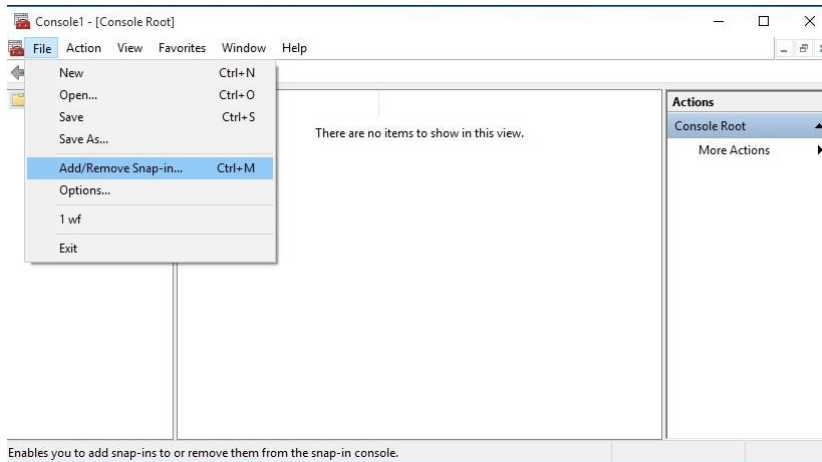


Click **Yes**

3. The Microsoft Management Console will loaded.

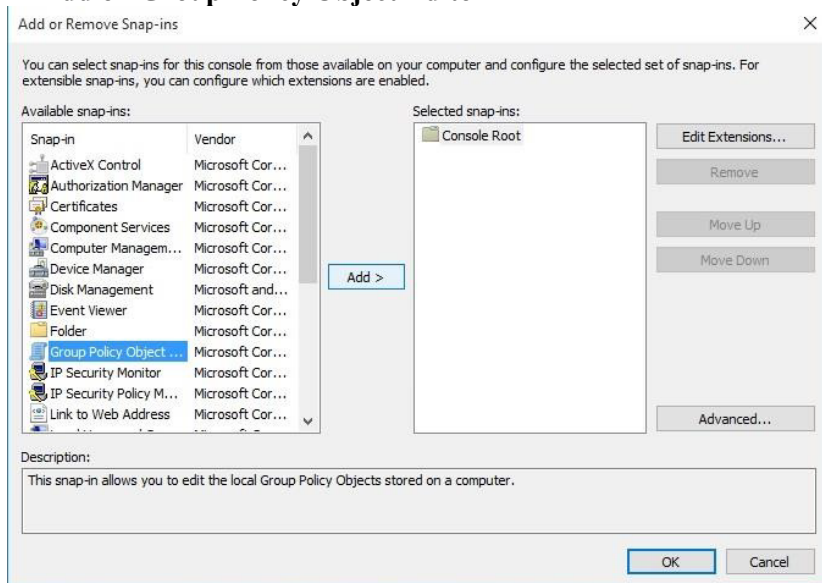


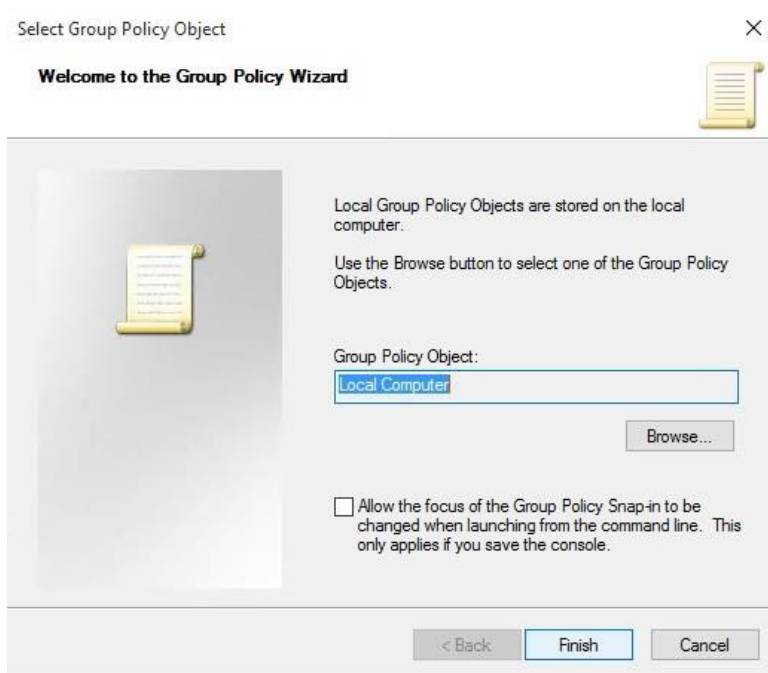
3. Click file > Add/Remove Snap-in..



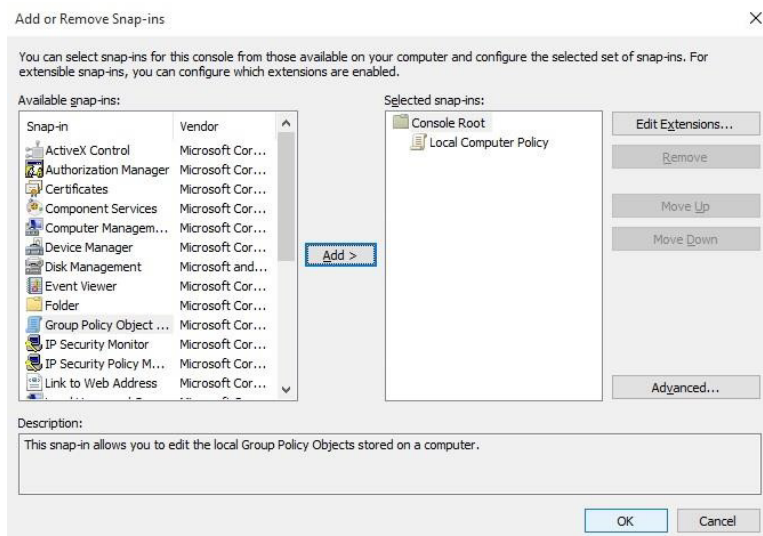
Enables you to add snap-ins to or remove them from the snap-in console.

4. Add on Group Policy Object Editor

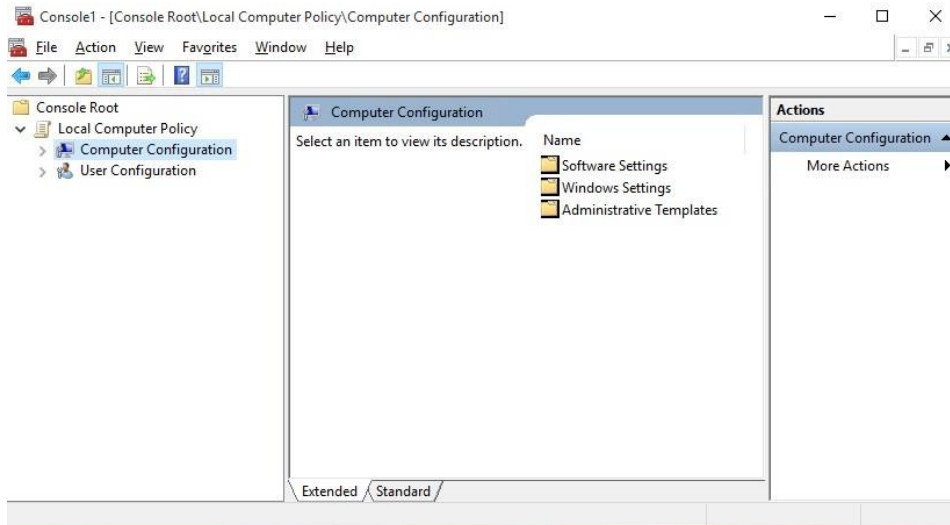




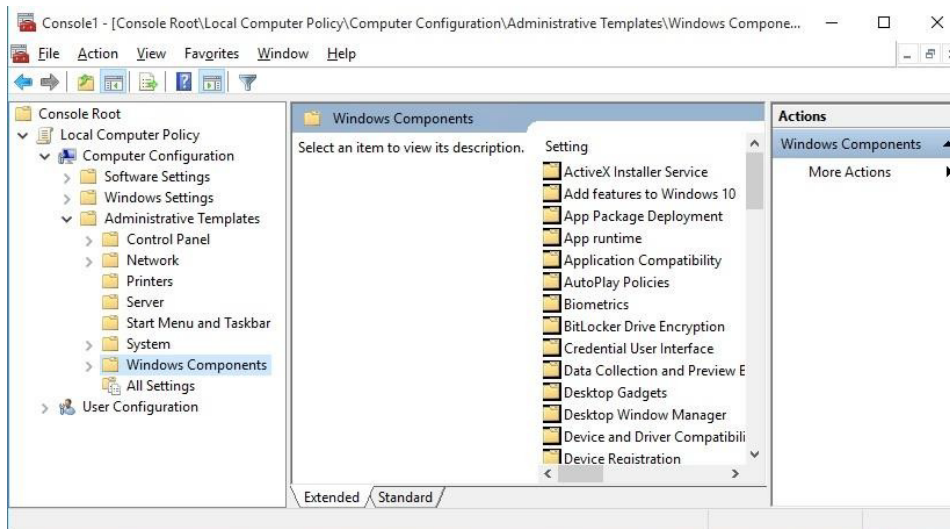
5. Then press Finish and OK



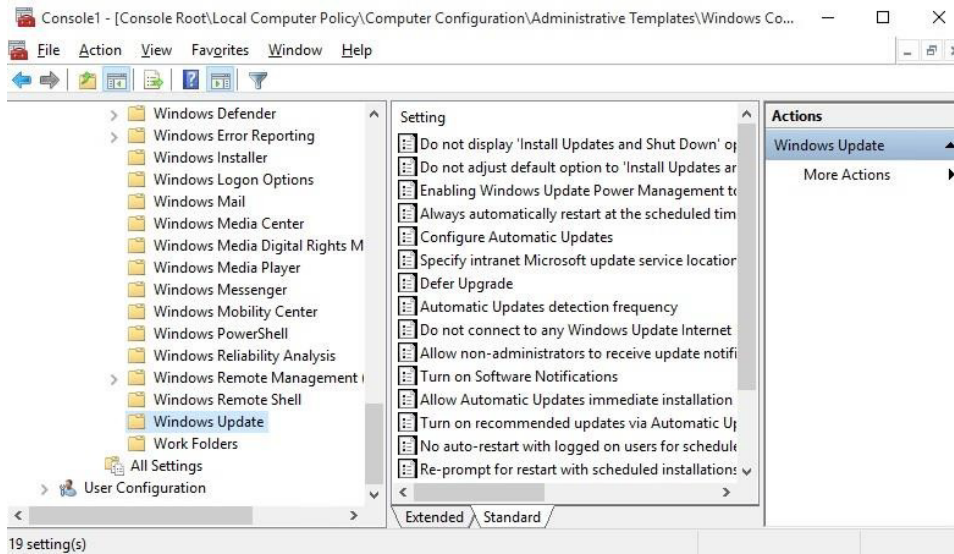
6. Console Root > Local Computer Policy > Computer Configuration



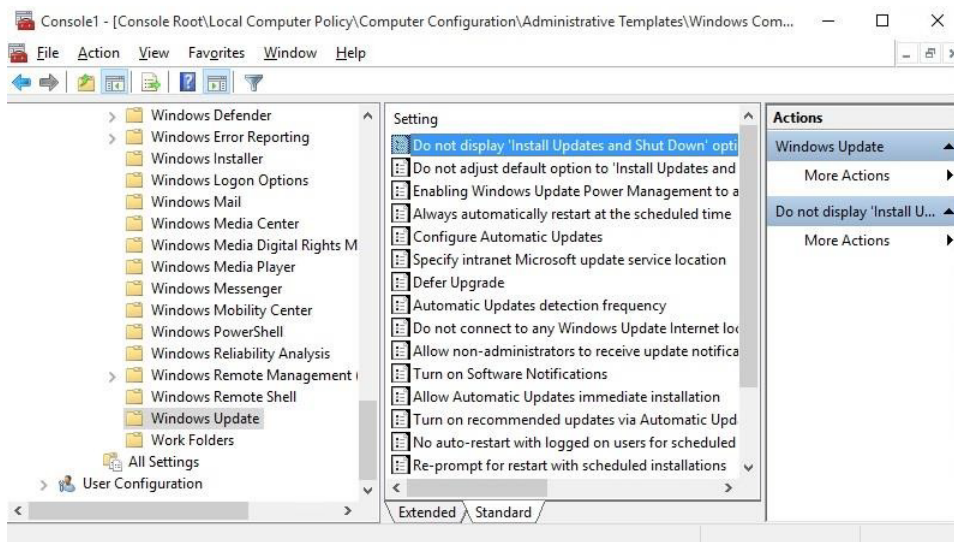
7. Click on Administrative Templates Folder > Windows Component Folder



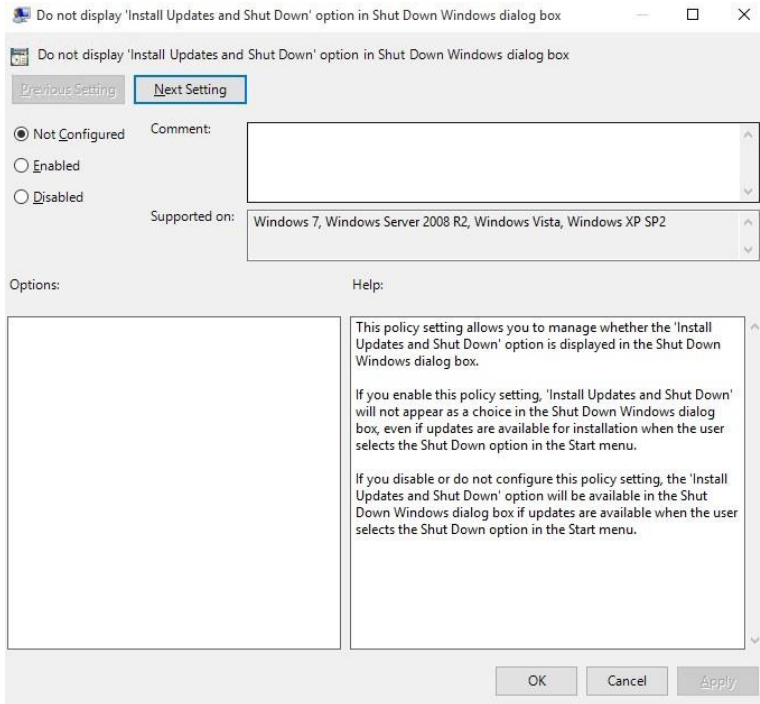
8. Go to Bottom and click on Windows Update Folder



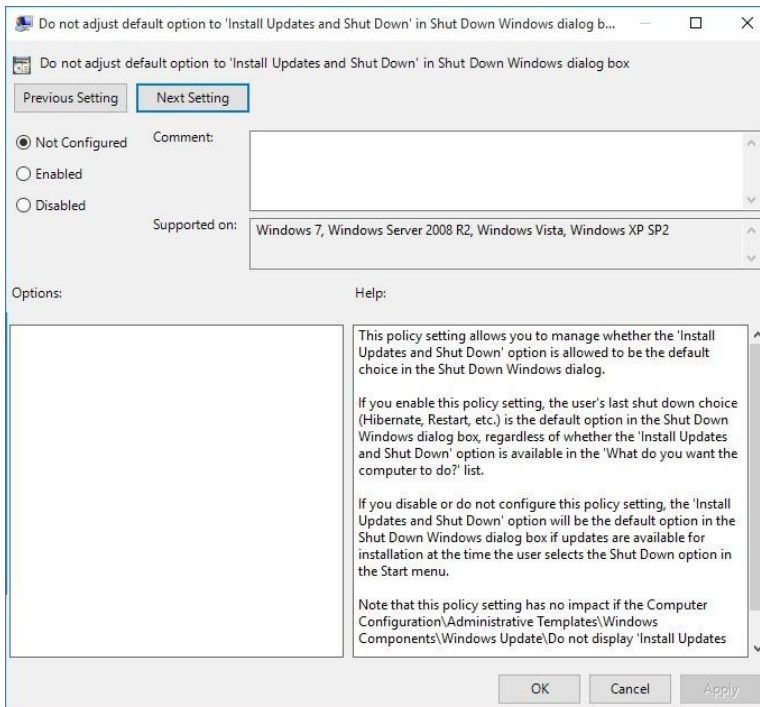
9. After you click Windows Update, on the right side of the MMC will shows the screenlike below, start configure by double click the “Configure Automatics Updates”.

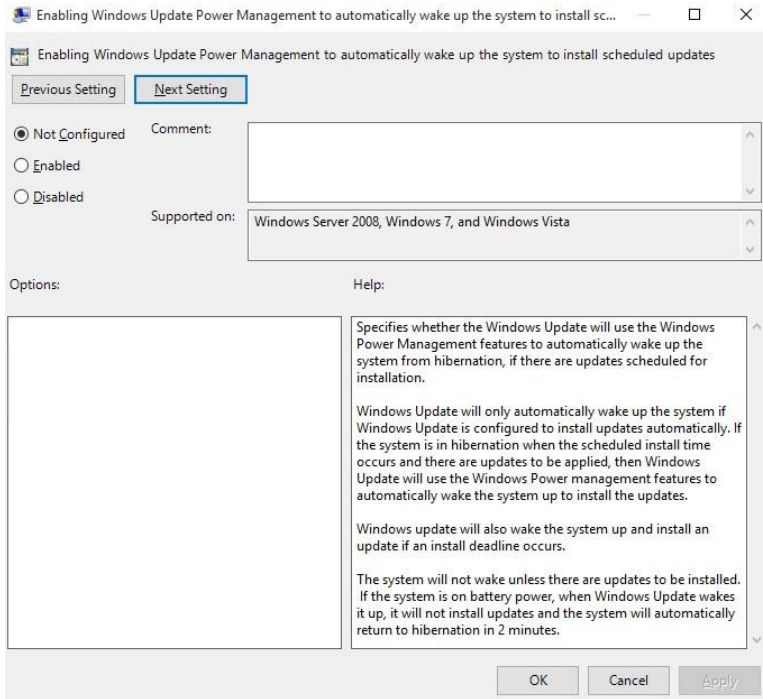


10. Simply follow the slide showing below to complete the setup.

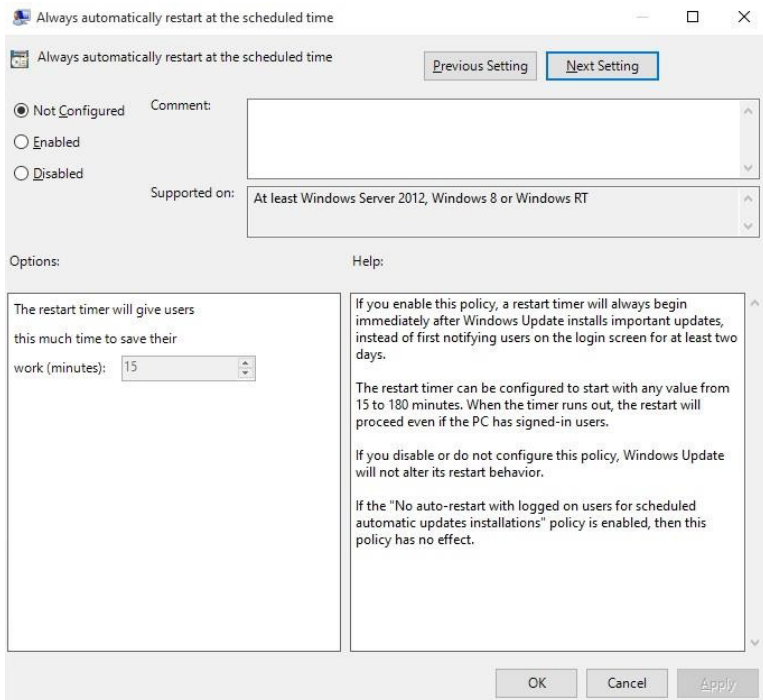


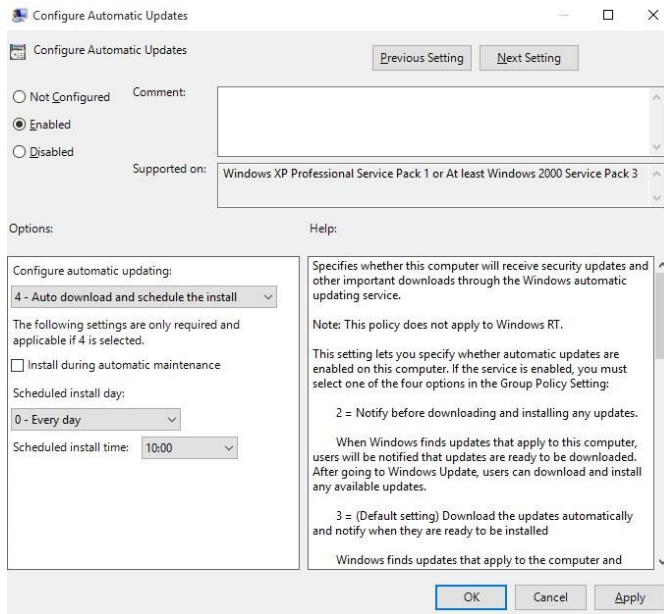
Click Next Setting





Click Next Setting

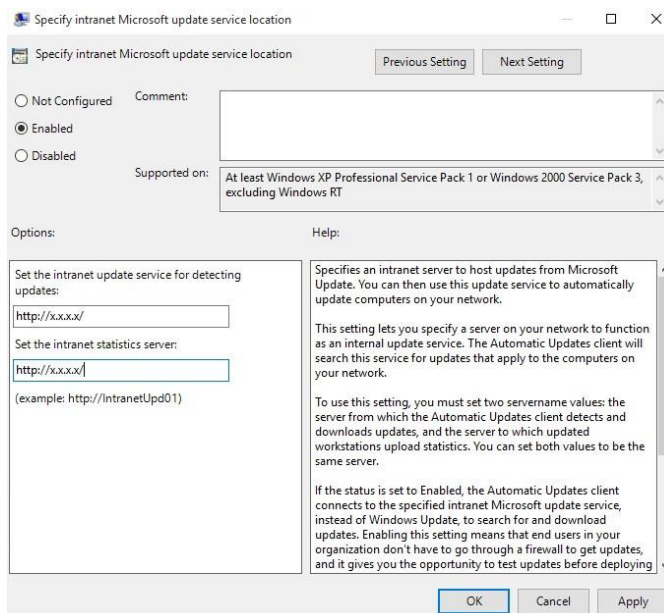


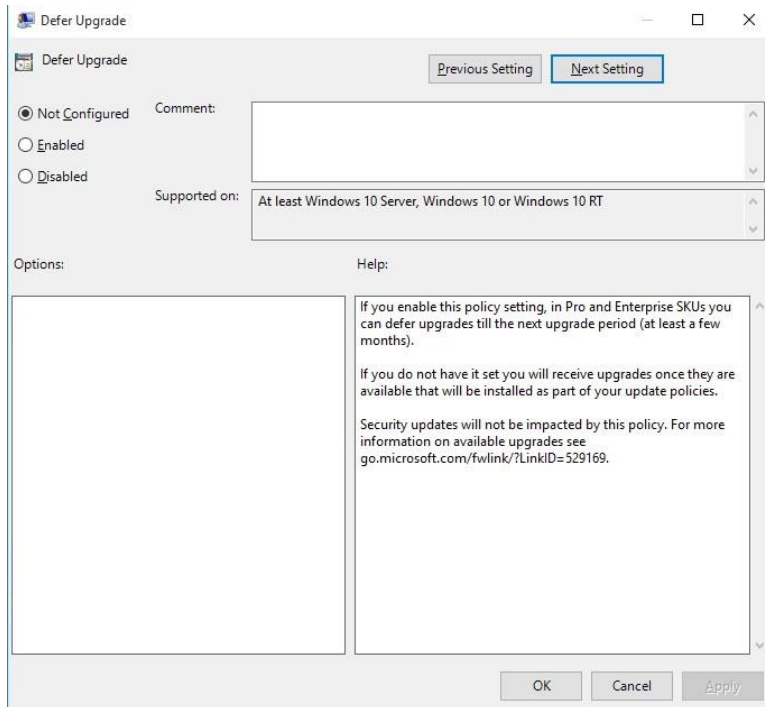


Click Next Setting

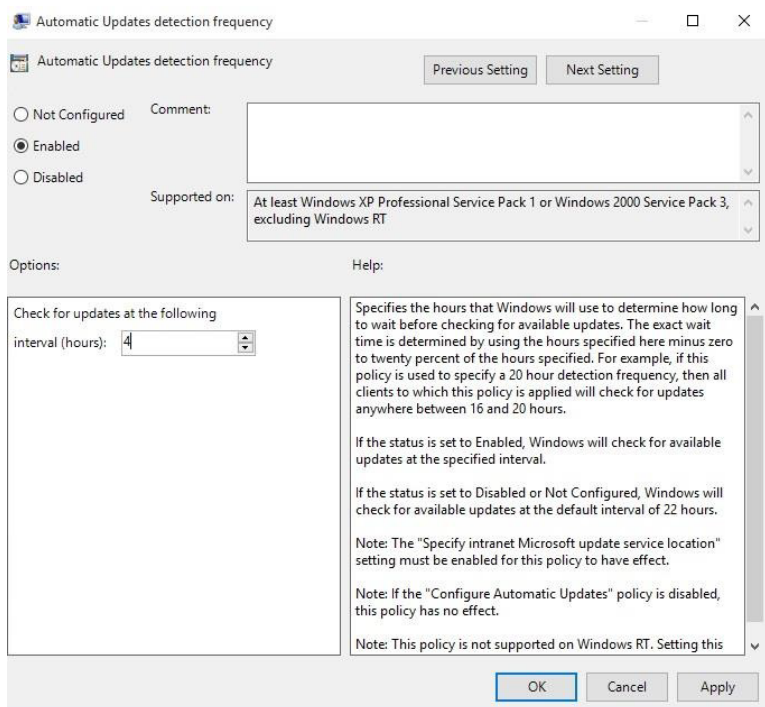
please put the ip given by the administrator

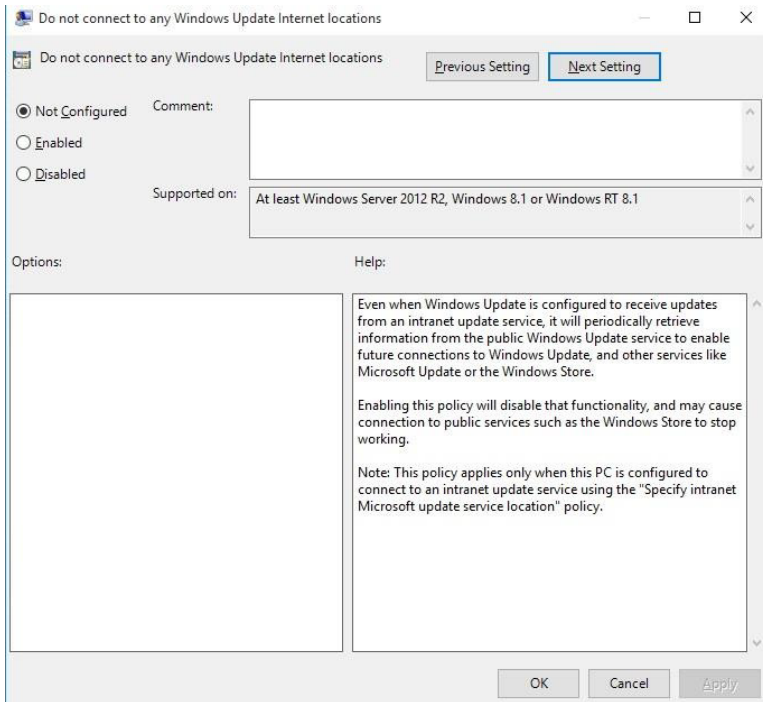
Example : <http://x.x.x.x/>



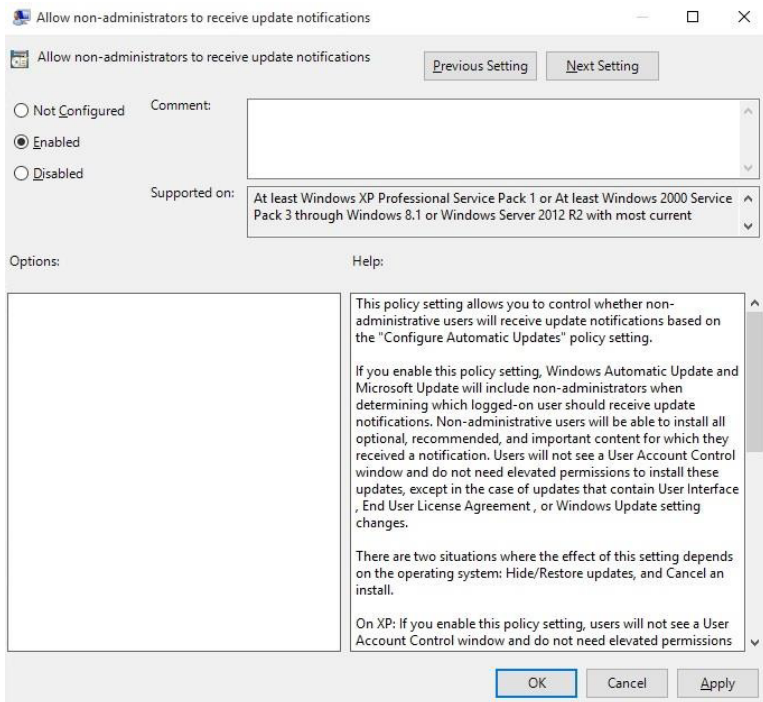


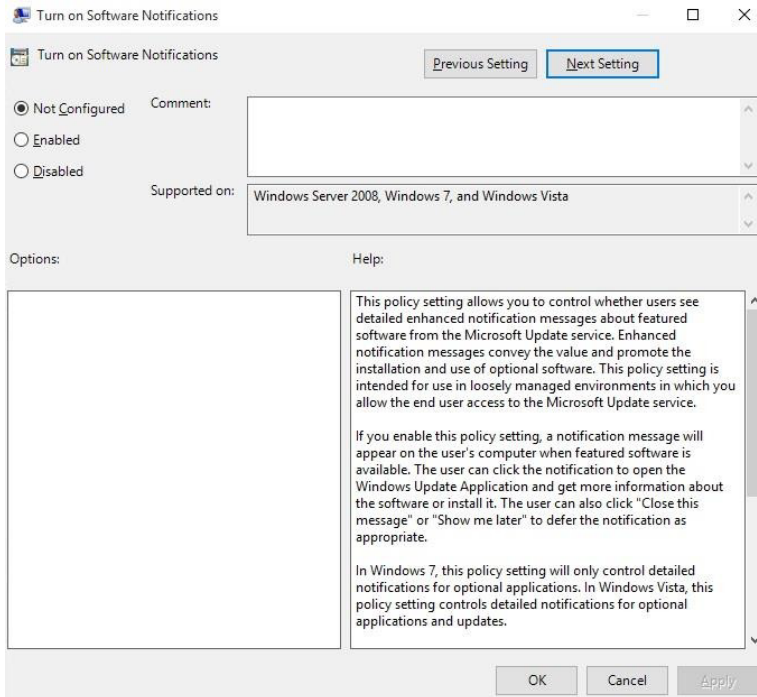
Click Next Setting



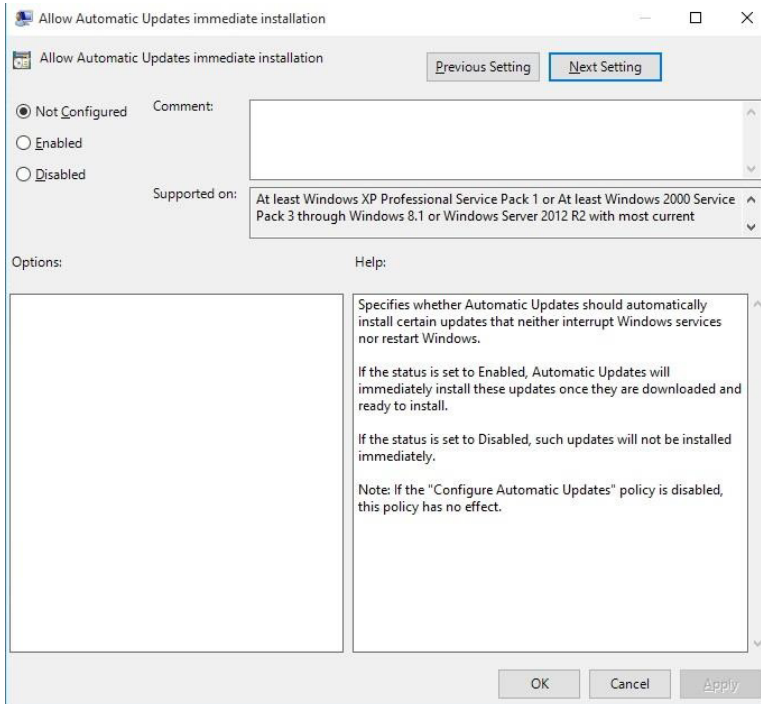


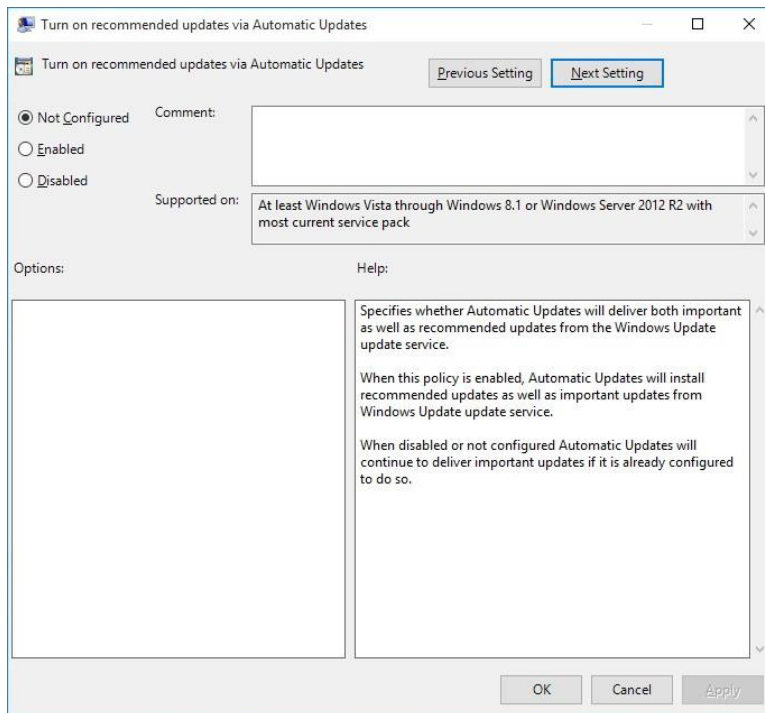
Click Next Setting



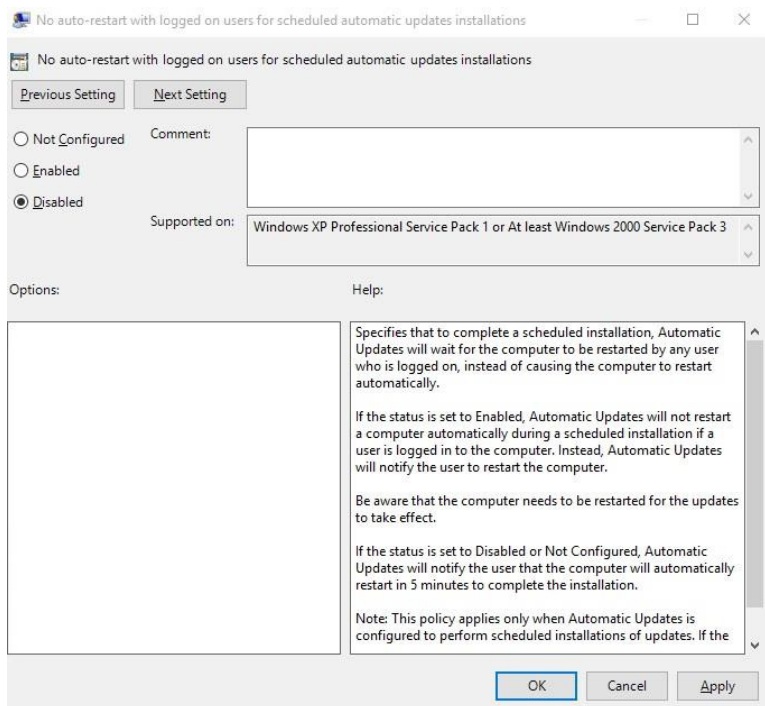


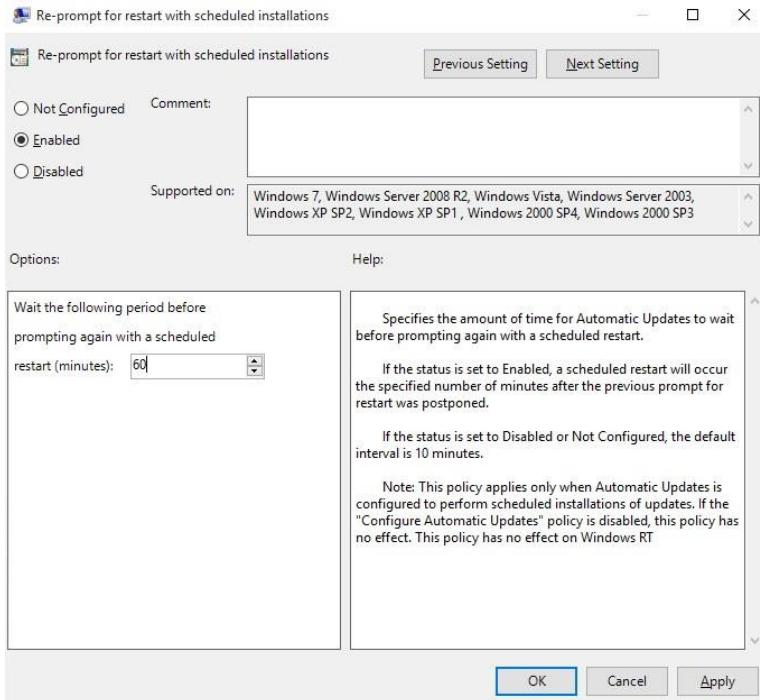
Click Next Setting



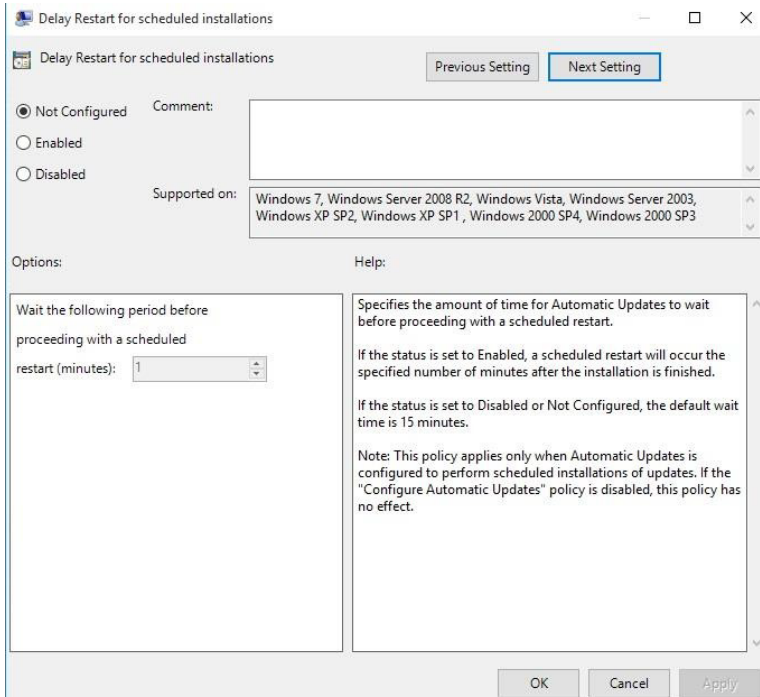


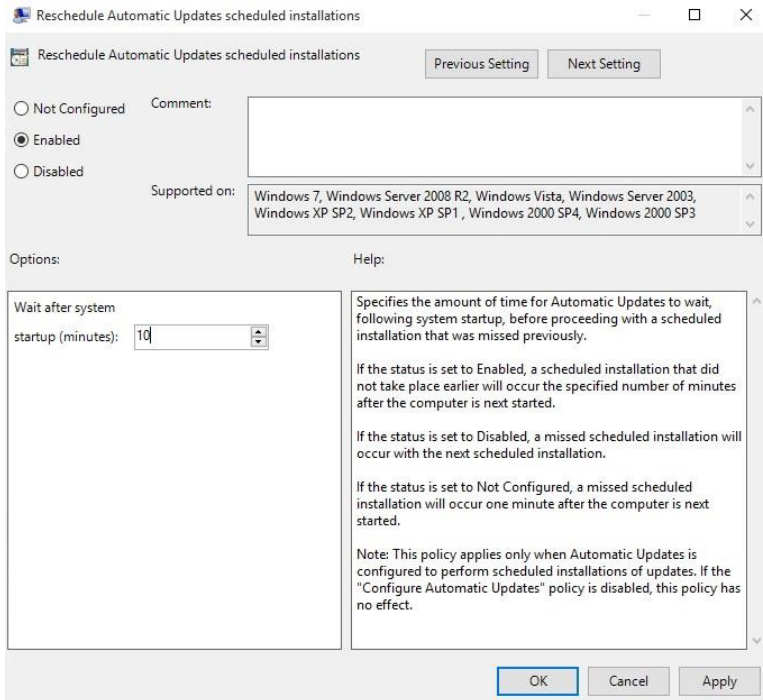
Click Next Setting





Click Next Setting





Reschedule Automatic Updates scheduled installations

Previous Setting Next Setting

Not Configured
 Enabled
 Disabled

Comment:

Supported on: Windows 7, Windows Server 2008 R2, Windows Vista, Windows Server 2003, Windows XP SP2, Windows XP SP1, Windows 2000 SP4, Windows 2000 SP3

Options: Help:

Wait after system startup (minutes): 10

Specifies the amount of time for Automatic Updates to wait, following system startup, before proceeding with a scheduled installation that was missed previously.

If the status is set to Enabled, a scheduled installation that did not take place earlier will occur the specified number of minutes after the computer is next started.

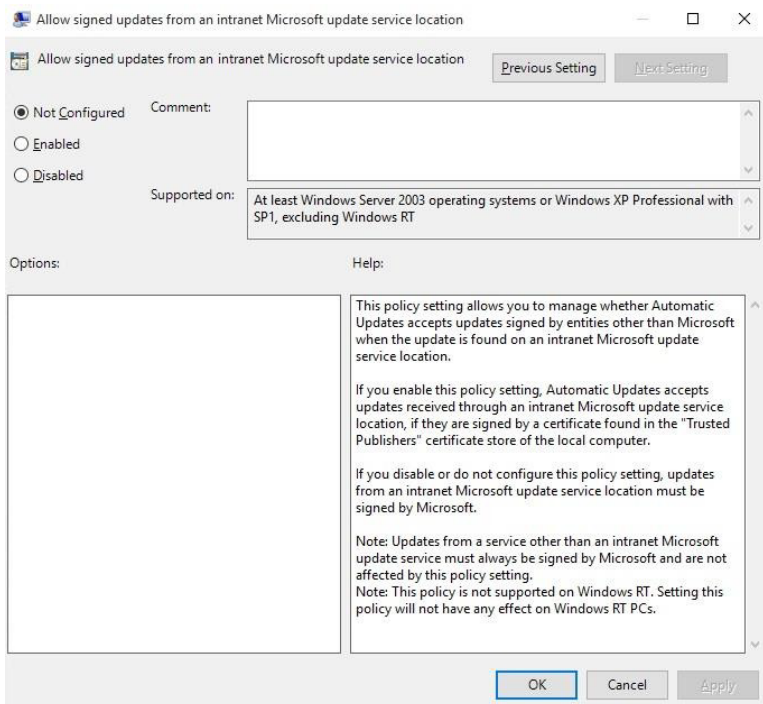
If the status is set to Disabled, a missed scheduled installation will occur with the next scheduled installation.

If the status is set to Not Configured, a missed scheduled installation will occur one minute after the computer is next started.

Note: This policy applies only when Automatic Updates is configured to perform scheduled installations of updates. If the "Configure Automatic Updates" policy is disabled, this policy has no effect.

OK Cancel Apply

Click Next Setting



Allow signed updates from an intranet Microsoft update service location

Previous Setting Next Setting

Not Configured
 Enabled
 Disabled

Comment:

Supported on: At least Windows Server 2003 operating systems or Windows XP Professional with SP1, excluding Windows RT

Options: Help:

This policy setting allows you to manage whether Automatic Updates accepts updates signed by entities other than Microsoft when the update is found on an intranet Microsoft update service location.

If you enable this policy setting, Automatic Updates accepts updates received through an intranet Microsoft update service location, if they are signed by a certificate found in the "Trusted Publishers" certificate store of the local computer.

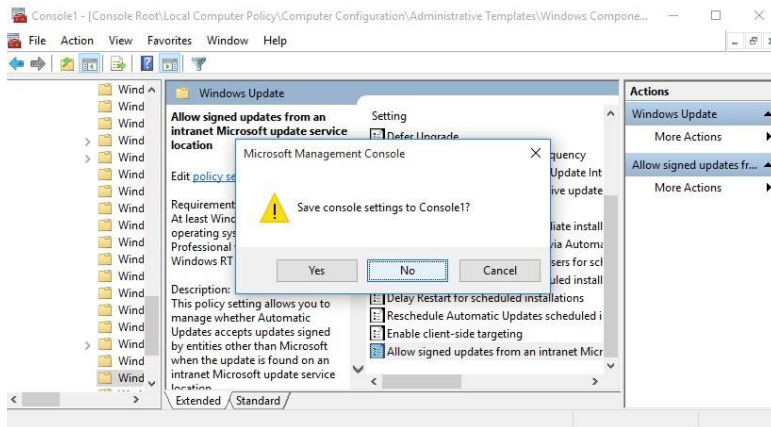
If you disable or do not configure this policy setting, updates from an intranet Microsoft update service location must be signed by Microsoft.

Note: Updates from a service other than an intranet Microsoft update service must always be signed by Microsoft and are not affected by this policy setting.

Note: This policy is not supported on Windows RT. Setting this policy will not have any effect on Windows RT PCs.

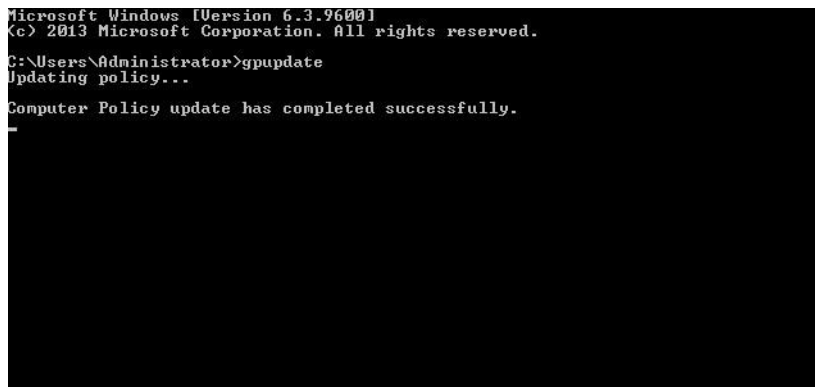
OK Cancel Apply

Click OK

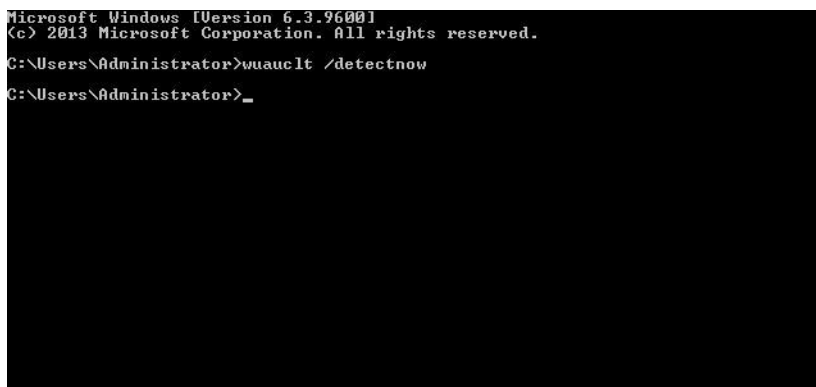


11. Lastly, just close the MMC without saving it.

12. Open Command Prompt . Run gpupdate



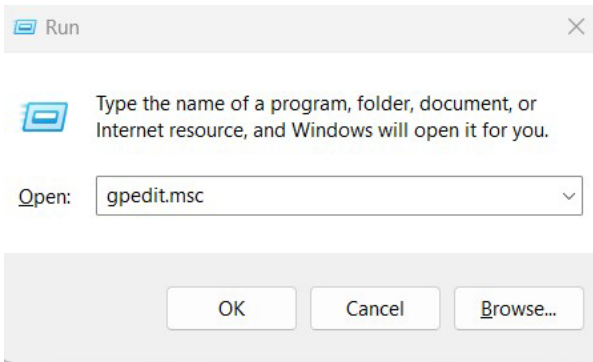
13. Run wuaclt /detectnow



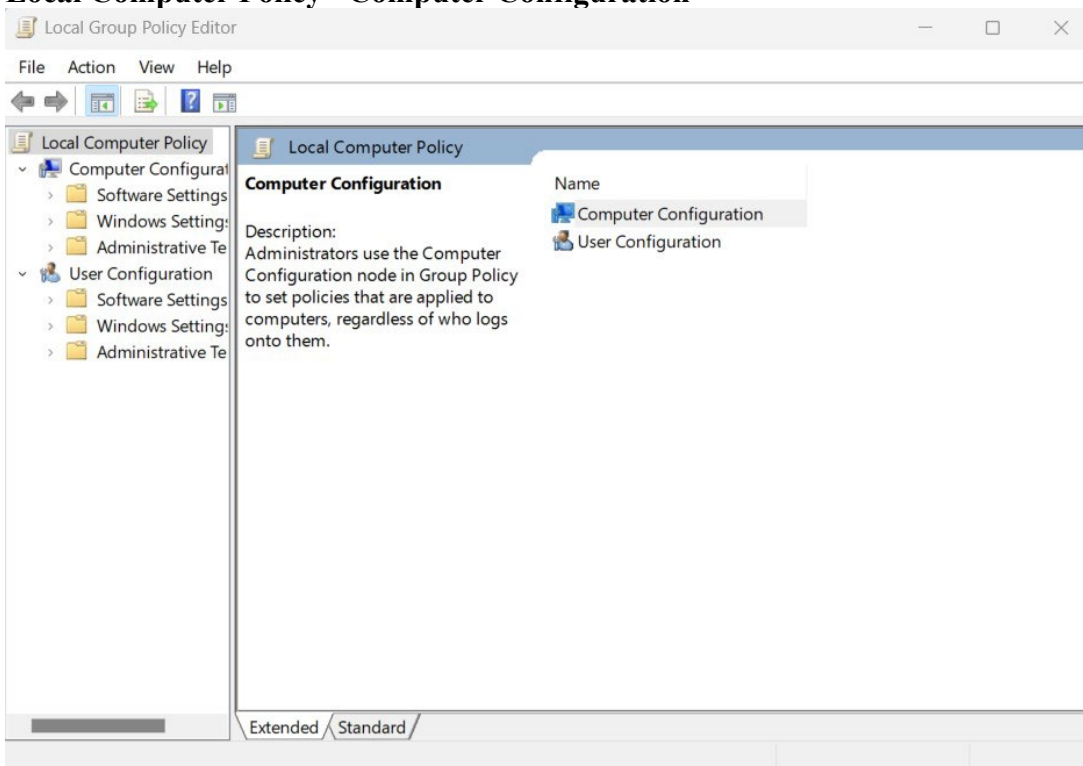
14. Perform/Run Windows update

Windows 11

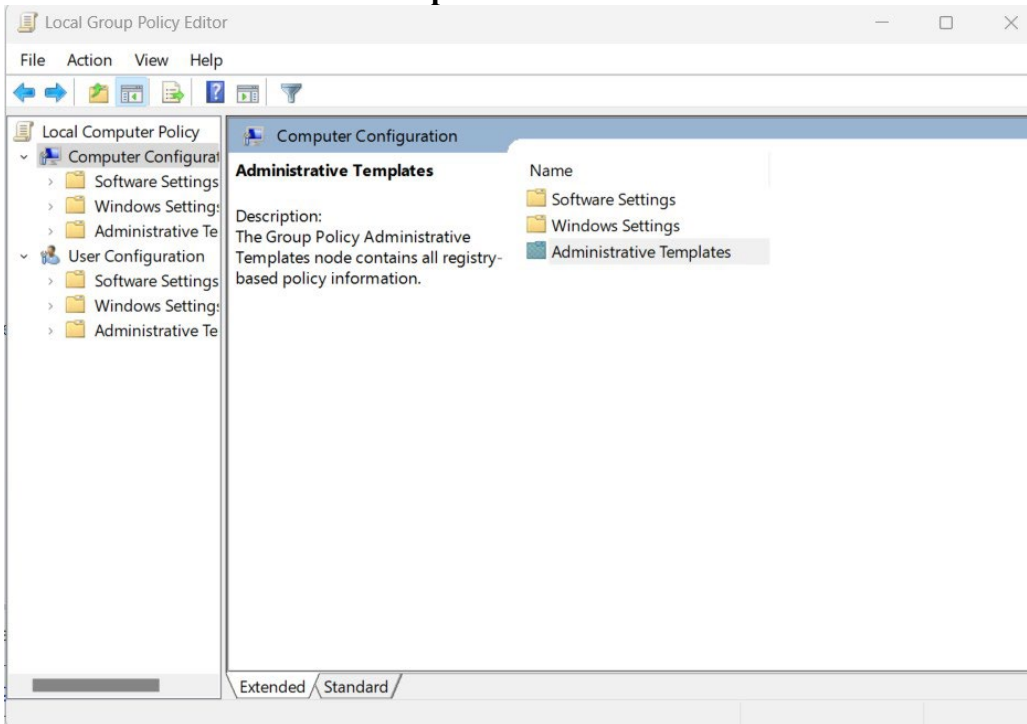
1. Click START, select Run and type **gpedit.msc**



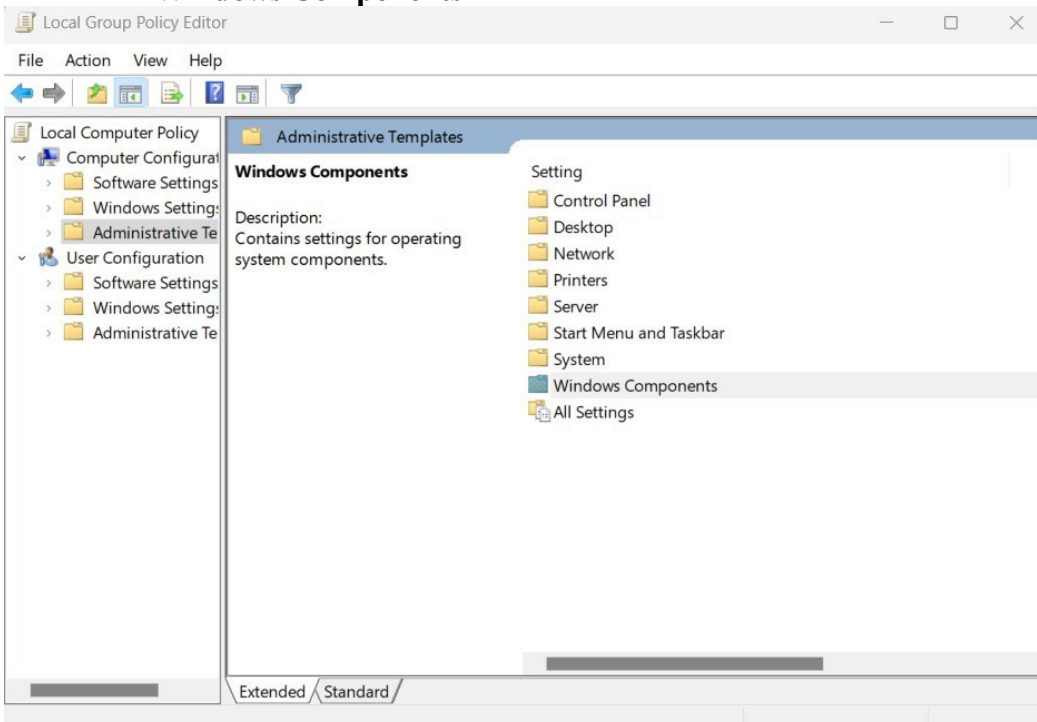
2. **Local Computer Policy >Computer Configuration**



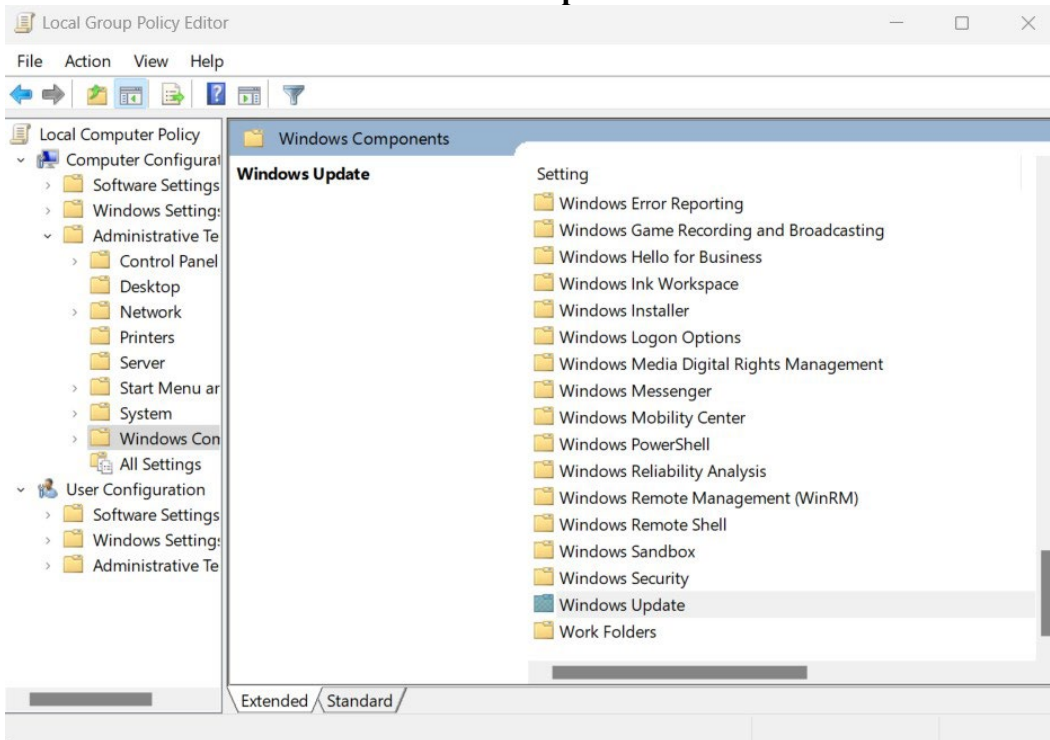
3. Click on **Administrative Templates**



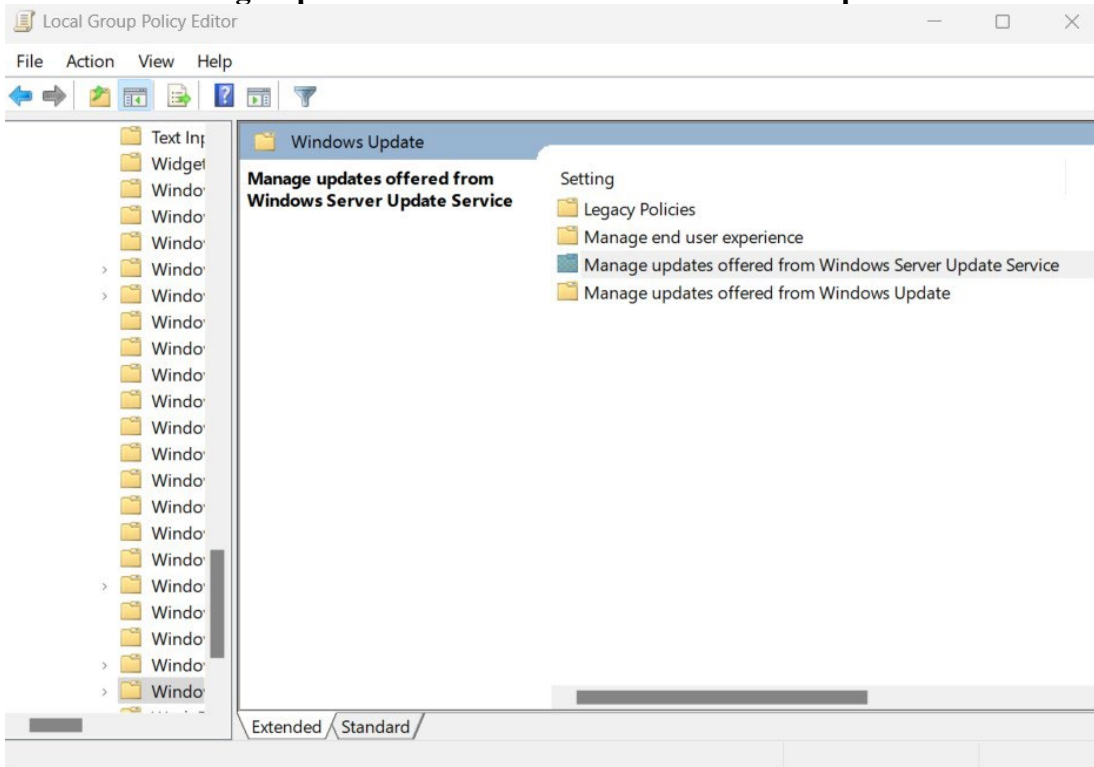
4. Click on **Windows Components**



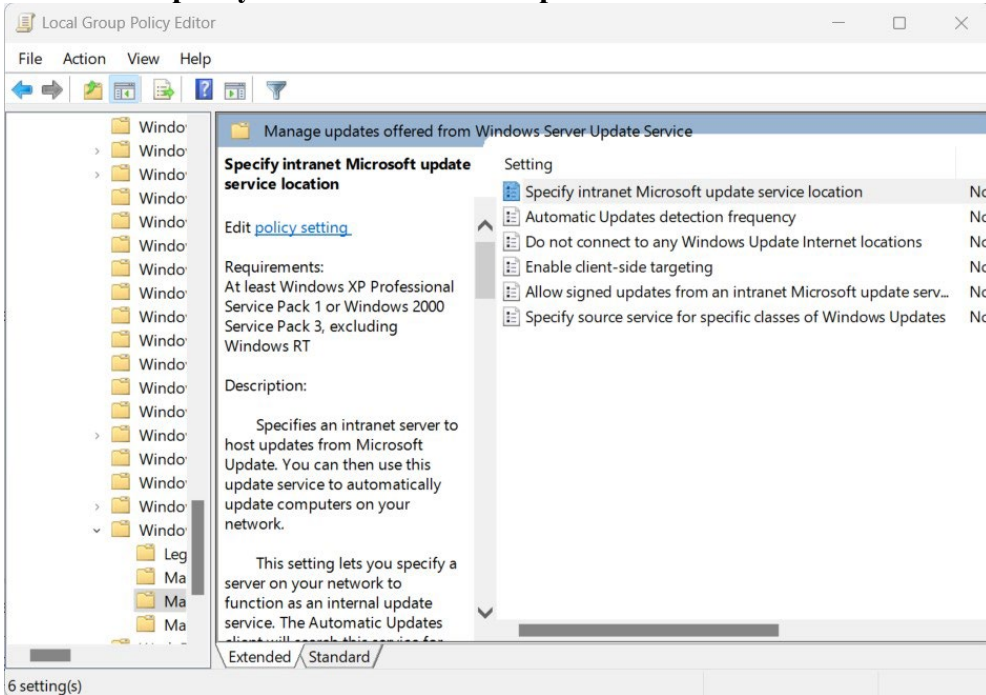
5. . Go to Bottom and click on **Windows Update**



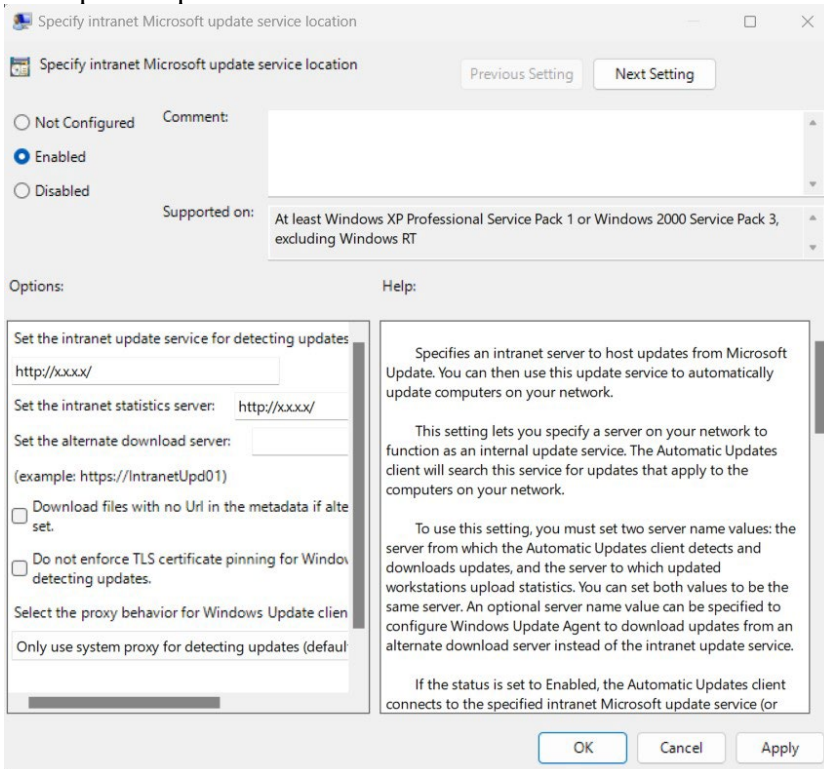
6. Click on **Manage Updates Offered from Windows Server Update Services**



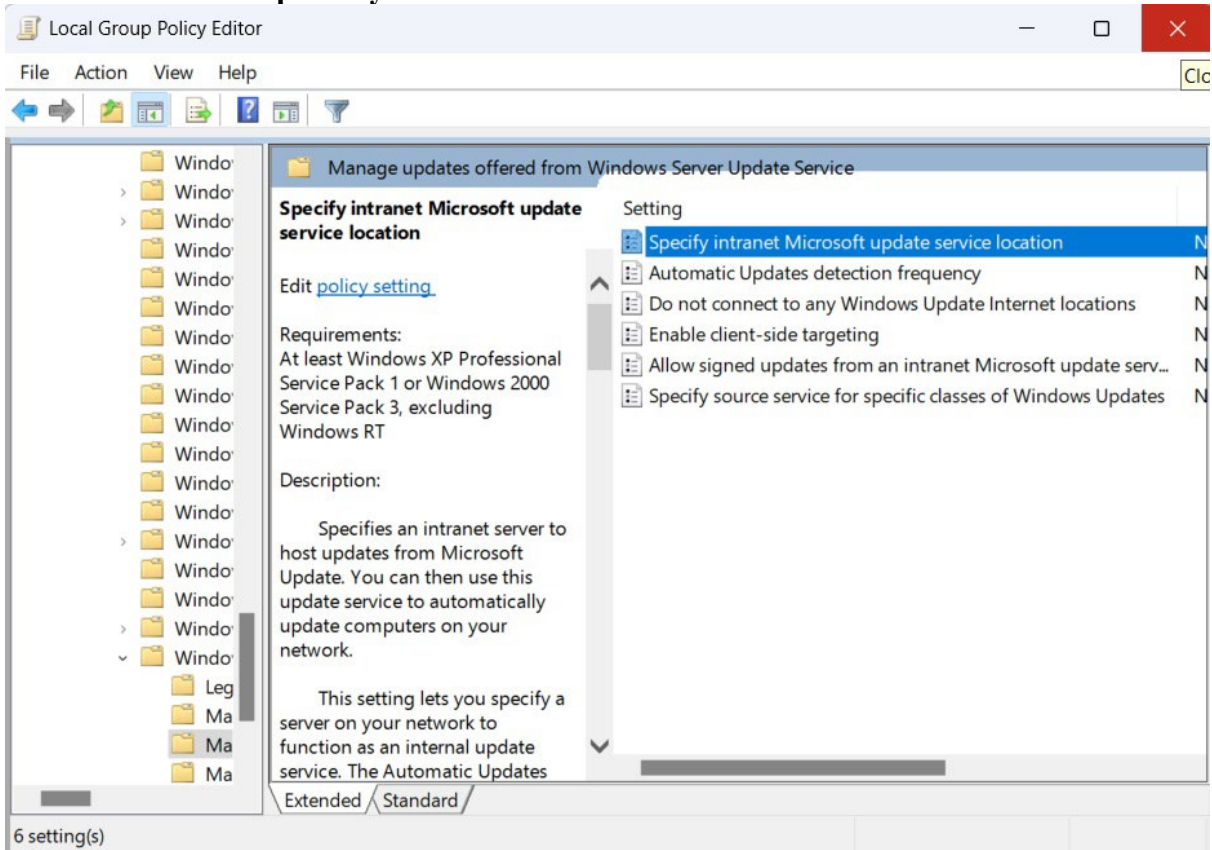
7. Click on Specify intranet Microsoft update service location



8. please put the ip given by the administrator and click **Apply** Example : <http://x.x.x.x/>



9. Close Local Group Policy Editor Window



10. Open Command Prompt . Run gpupdate

```
Microsoft Windows [Version 6.3.9600]
(c) 2013 Microsoft Corporation. All rights reserved.

C:\Users\Administrator>gpupdate
Updating policy...

Computer Policy update has completed successfully.
```

11. Run wuauclt /detectnow

```
Microsoft Windows [Version 6.3.9600]
(c) 2013 Microsoft Corporation. All rights reserved.

C:\Users\Administrator>wuauclt /detectnow
C:\Users\Administrator>_
```

12. Perform/Run Windows Update

Done!