



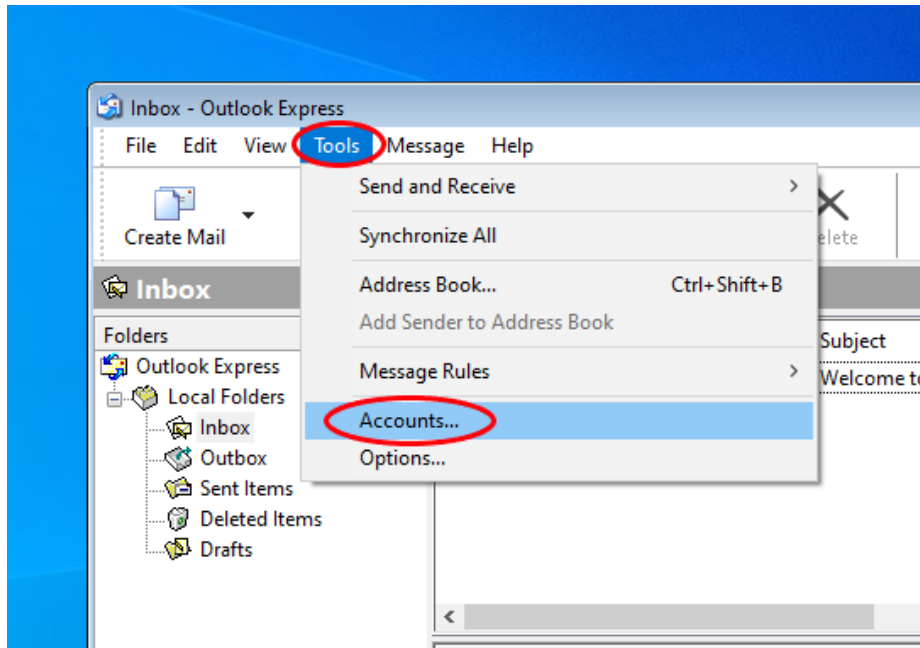
LDAP

User's Guide

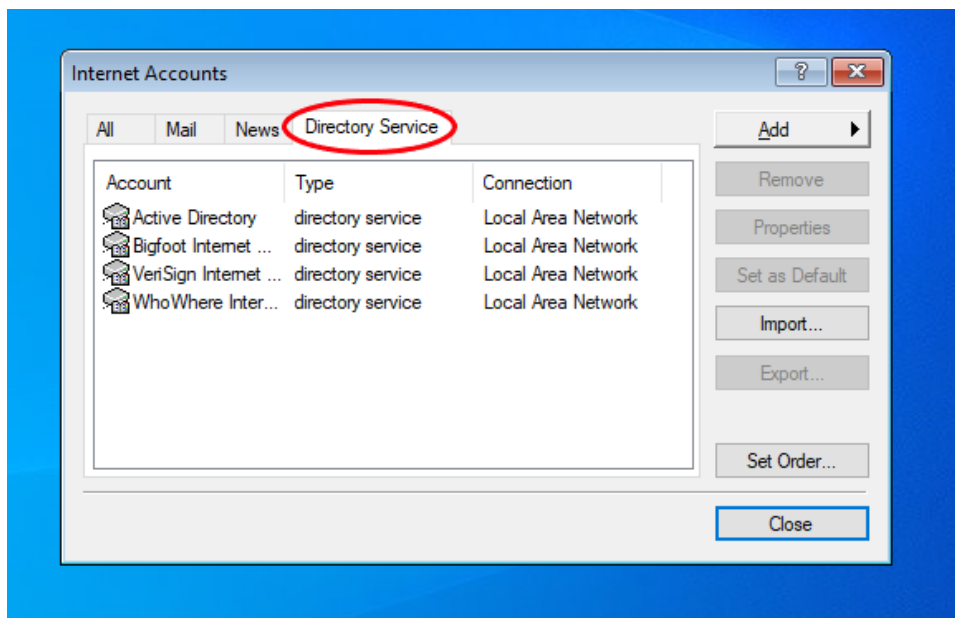
Outlook Express

Configuring Contact Directory (LDAP)

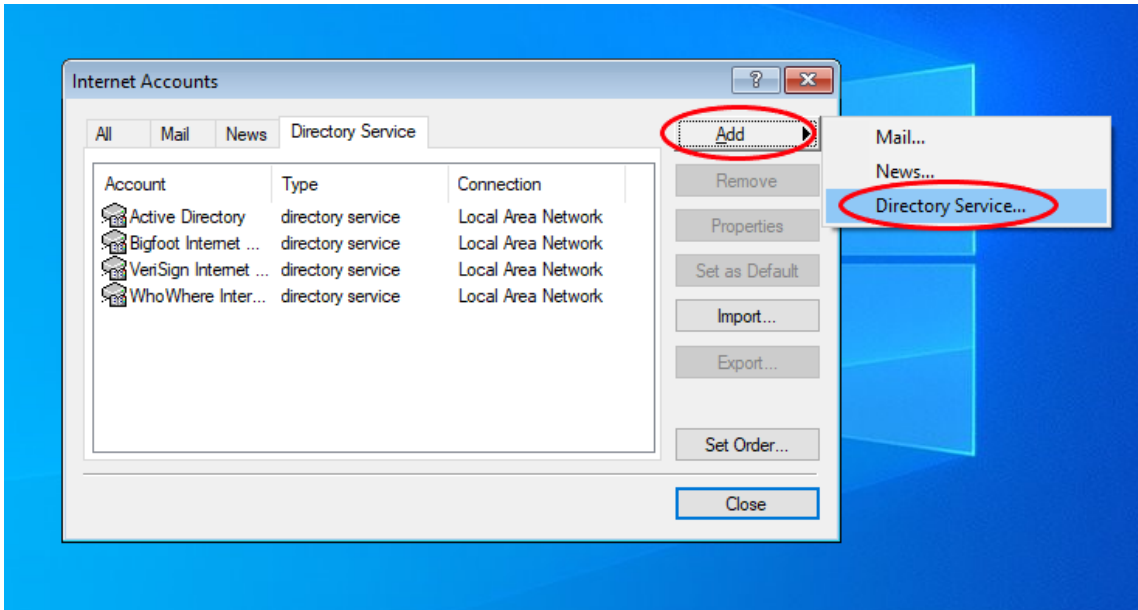
1. On Outlook Express, click **Tools** then click **Accounts**



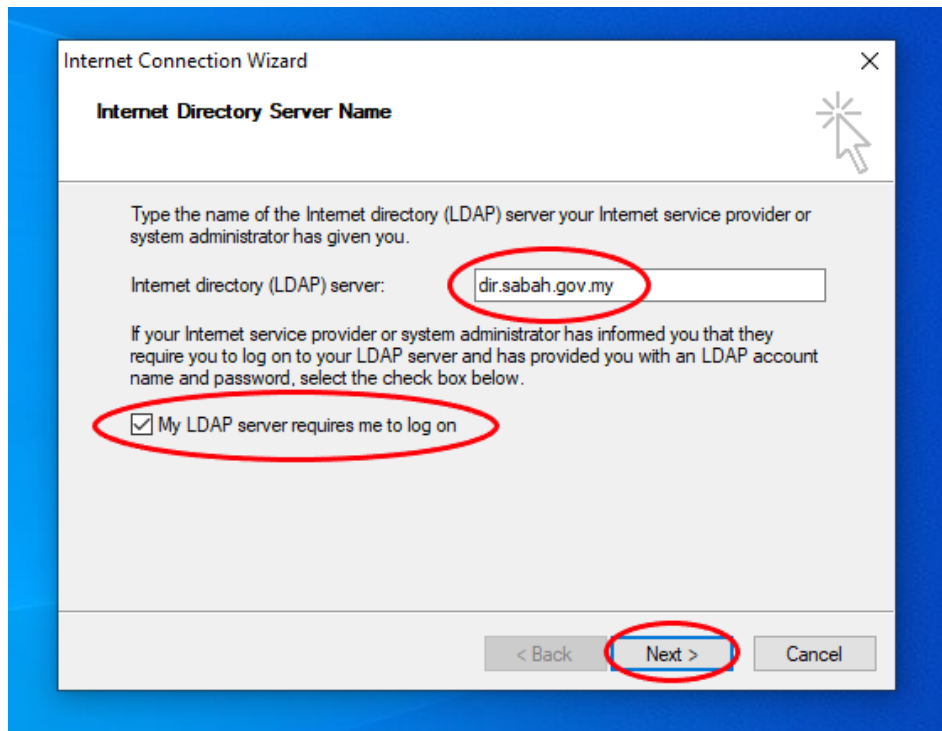
2. On **Internet Accounts** select **Directory Service** tab.



3. Click **Add**, select **Directory Service**



4. Enter **Internet Directory** field: **dir.sabah.gov.my** and tick **My LDAP server requires me to log on**, then click **Next**.



5. In the **Account name**: enter username and password (**sabah.gov.my email**) and click **Next**.

Internet Connection Wizard

Internet Directory Server Logon

Type the LDAP account name and password your Internet service provider has given you.

Account name:

Password:

If your Internet service provider requires you to use Secure Password Authentication (SPA) to access your LDAP account, select the 'Log On Using Secure Password Authentication (SPA)' check box.

Log on using Secure Password Authentication (SPA)

< Back **Next >** Cancel

6. Select **No** for Check E-mail Address then click **Next**.

Internet Connection Wizard

Check E-mail Addresses

Your e-mail program checks the e-mail addresses of your message recipients using one or more directory service address lists.

Using a directory service to check the e-mail addresses of your message recipients may slow down the performance of your e-mail program.

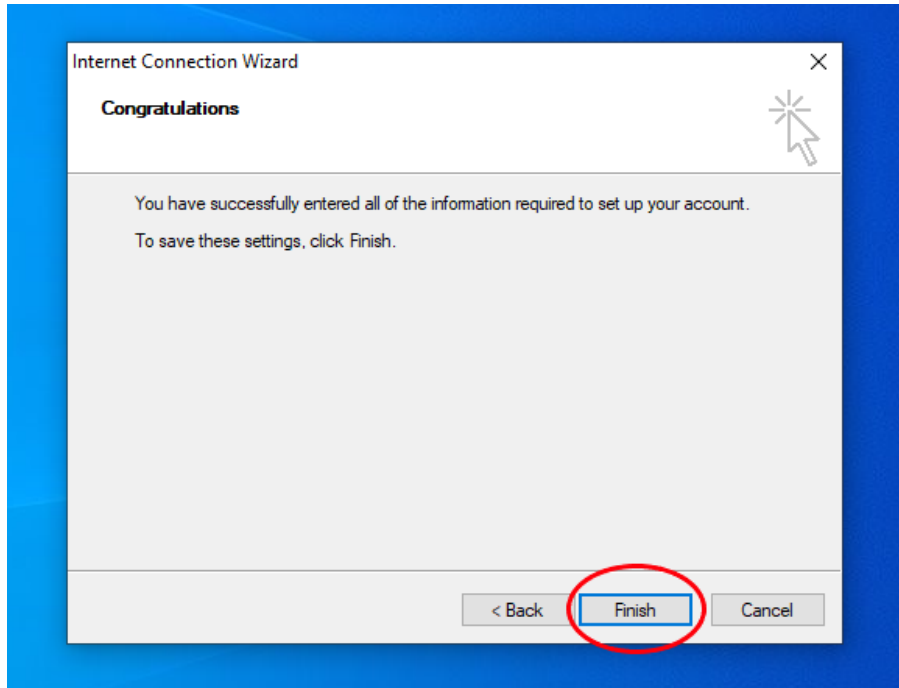
Do you want to check addresses using this directory service?

Yes

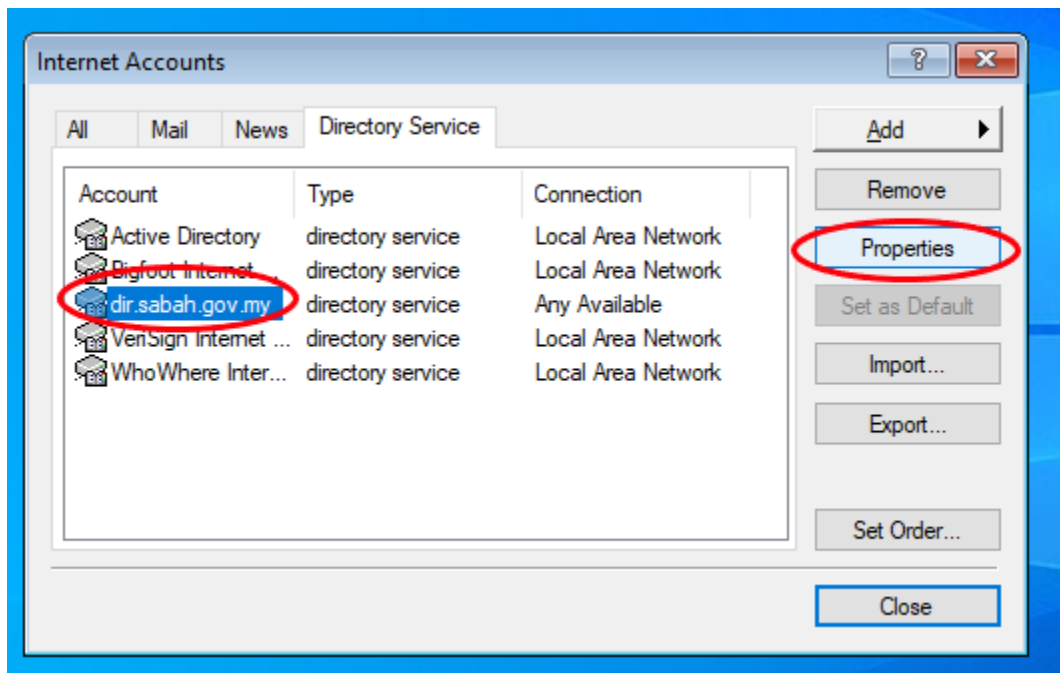
No

< Back **Next >** Cancel

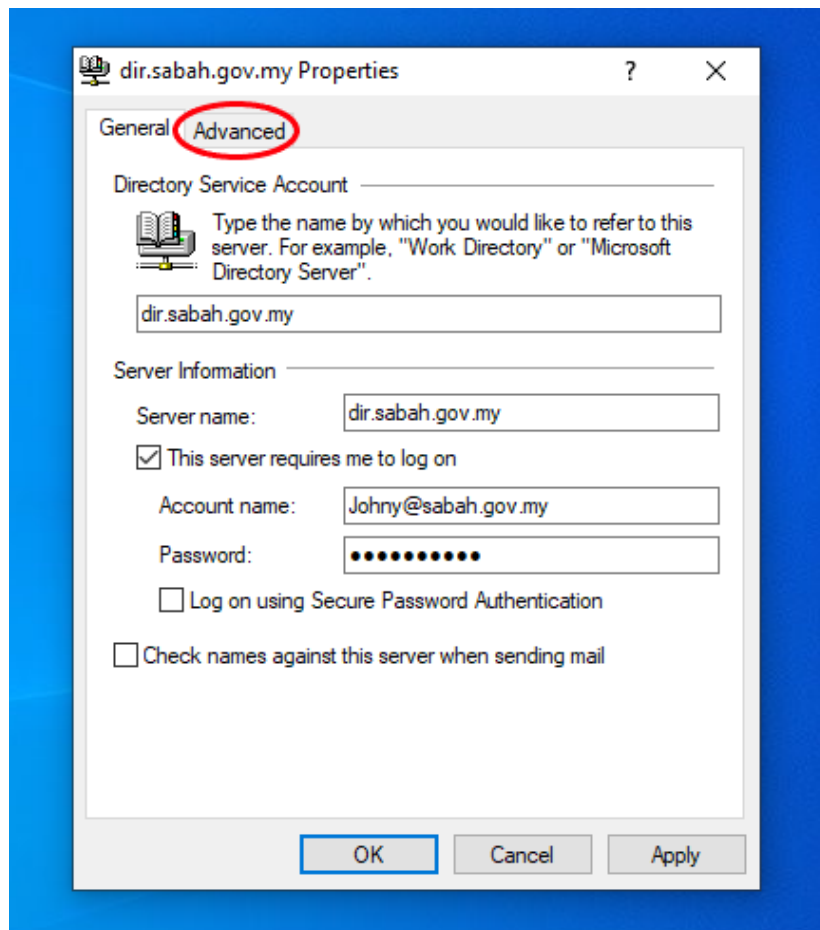
7. Click **Finish**.



8. After finish, On **Contact Directory** select **dir.sabah.gov.my** and click **Properties**.

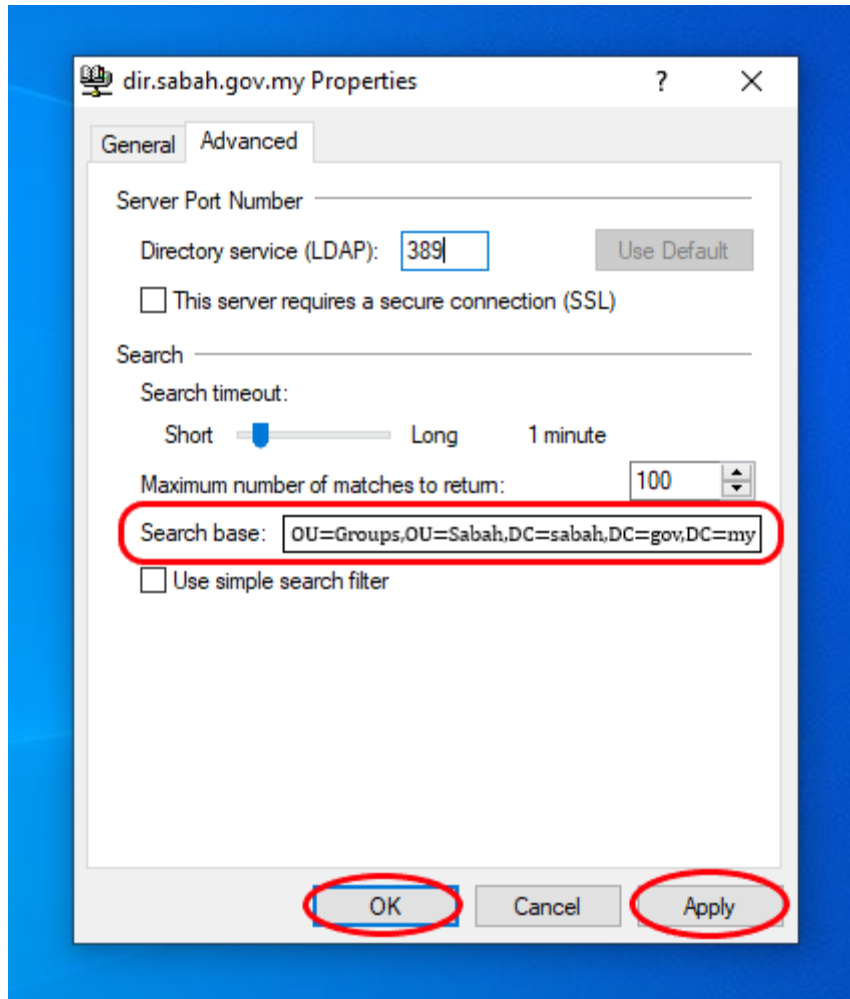


9. On **dir.sabah.gov.my Properties**, click **Advanced** tab.



10. In the Search base field enter:

OU=Groups,OU=Sabah,DC=sabah,DC=gov,DC=my and click **Apply** first then click **OK**.



- end -